

IG-22C

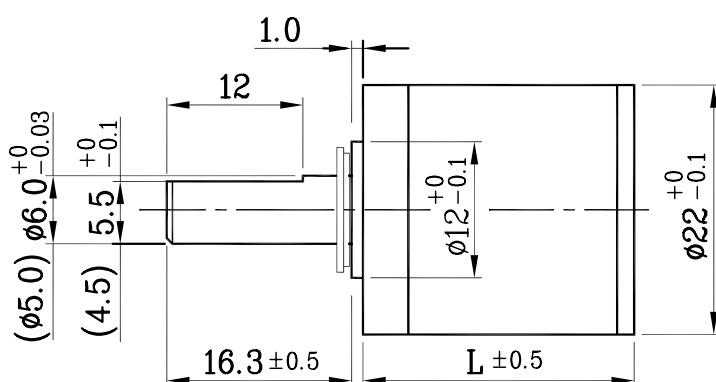
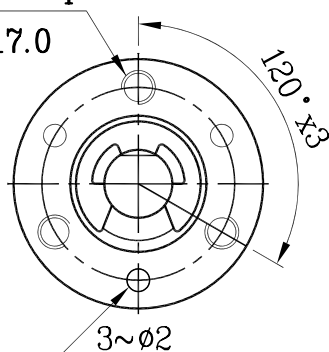


| | | | |
|--|-------------|----------------------------------|-----------------------|
| 外殼材質 Housing material | 金屬 metal | 背隙(無負荷時) Backlash, at no-load | ≤ 2.5° |
| 輸出軸承型式 Bearing at output | | 含油軸承 Sleeve bearings | 滾珠軸承 Ball bearings |
| 徑向負荷 Radial load (10mm from flange) | | ≤ 1 kgf | ≤ 1.2 kgf |
| 軸向負荷 Shaft axial load | | ≤ 0.7 kgf | ≤ 0.7 kgf |
| 主軸最大承受壓入力 Shaft press fit force, max. | | ≤ 6 kgf | ≤ 6 kgf |
| 徑向間隙 Radial play of shaft | | ≤ 0.05 mm | ≤ 0.04 mm |
| 軸向間隙 Thrust play of shaft | | ≤ 0.3 mm | ≤ 0.3 mm |

外形尺寸 APPEARANCE SIZE

3~M3x4.0 dp.

PCDØ17.0

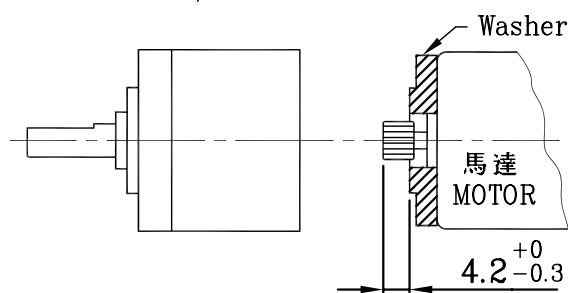


scale: 3:2

馬達齒輪型式 / PINION SPECIFICATIONS

| | | | | |
|------------------------|---|--|-----------------------|-----|
| 模數 Module | 0.4 | | | |
| 齒數 No. of teeth | 10 | 13 | 16 | 12 |
| 壓力角 Pressure angle | 20° | | | |
| 孔徑 Hole diameter | Ø1.98 , Ø2.28 | | | |
| 減速比 Reduction ratio | 1/25, 1/110 1/136, 1/484 1/597, 1/735 1/2124, 1/3968 | 1/20, 1/77 1/90, 1/336 1/393, 1/1079 1/1475 | 1/18 1/66 1/246 | 1/5 |

馬達裝卸方法 / MOTOR INSTALLATION



標準減速比型式 / GEARBOXES SPECIFICATIONS

| 減速比 Reduction ratio | 精確減速比 Exact reduction ratio | 定格容許扭力 Rated tolerance torque | 瞬間容許扭力 Max momentary tolerance torque | 效率 Efficiency | L | 重量(含油軸承) Weight (g) Sleeve bearings | 重量(滾珠軸承) Weight (g) Ball bearings |
|------------------------|--------------------------------|----------------------------------|--|------------------|------|---|---|
| 1/5 | 4 2/3 | 2.0 kgf-cm Max. | 6.0 kgf-cm | 80% | 23.3 | 46 | 46 |
| 1/18, 1/20, 1/25 | 17 1/2, 20 6/13, 25 1/5 | 3.0 kgf-cm Max. | 9.0 kgf-cm | 70% | 29.5 | 51 | 51 |
| 1/66, 1/77, 1/90 | 65 5/8, 76 19/26, 89 121/169 | 4.0 kgf-cm Max. | 12.0 kgf-cm | 60% | 35.7 | 58 | 58 |
| 1/110, 1/136 | 110 32/65, 136 2/25 | 4.0 kgf-cm Max. | 12.0 kgf-cm | 60% | 35.7 | 58 | 58 |
| 1/246, 1/336 | 246 3/32, 336 147/338 | 5.0 kgf-cm Max. | 15.0 kgf-cm | 50% | 41.9 | 65 | 65 |
| 1/393, 1/484 | 393 813/2197, 484 394/845 | 5.0 kgf-cm Max. | 15.0 kgf-cm | 50% | 41.9 | 65 | 65 |
| 1/597, 1/735 | 596 214/325, 734 104/125 | 5.0 kgf-cm Max. | 15.0 kgf-cm | 50% | 41.9 | 65 | 65 |
| 1/1079 | 1079 11/416 | 6.0 kgf-cm Max. | 18.0 kgf-cm | 40% | 48.1 | 72 | 72 |
| 1/1475 | 1475 605/4394 | 6.0 kgf-cm Max. | 18.0 kgf-cm | 40% | 48.1 | 72 | 72 |
| 1/2124 | 2124 2178/10985 | 6.0 kgf-cm Max. | 18.0 kgf-cm | 40% | 48.1 | 72 | 72 |
| 1/3968 | 3968 58/625 | 6.0 kgf-cm Max. | 18.0 kgf-cm | 40% | 48.1 | 72 | 72 |

★ 使用相對溼度: 20%~85%RH ★ 使用溫度範圍: -10°C~+60°C
Operating relative humidity Operating temperature range