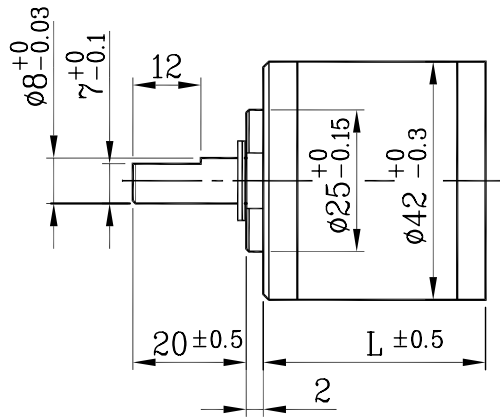
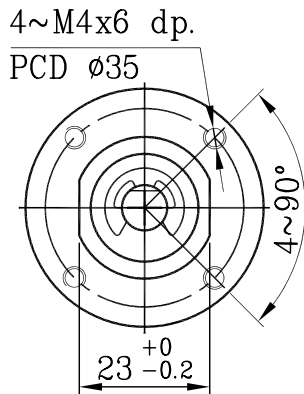


IG-42



外殼材質 Housing material	金屬 metal	背隙(無負荷時) Backlash, at no-load	≤ 3°
輸出軸承型式 Bearing at output		含油軸承 Sleeve bearings	滾珠軸承 Ball bearings
徑向負荷 Radial load (10mm from flange)		≤ 5 kgf	≤ 8 kgf
軸向負荷 Shaft axial load		≤ 3 kgf	≤ 3 kgf
主軸最大承受壓入力 Shaft press fit force, max.		≤ 15 kgf	≤ 15 kgf
徑向間隙 Radial play of shaft		≤ 0.05 mm	≤ 0.04 mm
軸向間隙 Thrust play of shaft		≤ 0.3 mm	≤ 0.3 mm

外形尺寸 APPEARANCE SIZE

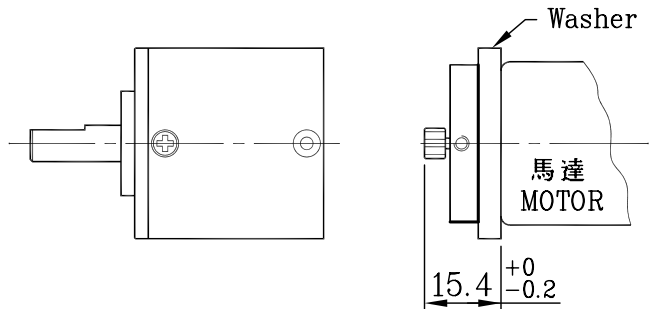


scale: 3:4

馬達齒輪型式 / PINION SPECIFICATIONS

模數 Module	0.6				
齒數 No. of teeth	12	15	18	24	20
壓力角 Pressure angle	20°				
孔徑 Hole diameter	ø3.98		ø4.98		
減速比 Reduction ratio	1/24, 1/84	1/720, 1/1062	1/17	1/14	1/4
	1/104, 1/144	1/1470, 1/2500	1/61	1/49	
	1/504, 1/864	1/3000, 1/3600	1/212		

馬達裝卸方法 / MOTOR INSTALLATION



標準減速比型式 / GEARBOXES SPECIFICATIONS

★ 使用相對溼度: 20%~85%RH ★ 使用溫度範圍: -10°C~+60°C
Operating relative humidity Operating temperature range

減速比 Reduction ratio	精確減速比 Exact reduction ratio	定格容許扭力 Rated tolerance torque	瞬間容許扭力 Max momentary tolerance torque	效率 Efficiency	L	重量(含油軸承) Weight (g) Sleeve bearings	重量(滾珠軸承) Weight (g) Ball bearings
1/4	4	5.0 kgf-cm Max.	15.0 kgf-cm	80%	32.5	141	139
1/14, 1/17, 1/24	14, 17 1/3, 24	10.0 kgf-cm Max.	30.0 kgf-cm	70%	39.2	193	191
1/49, 1/61, 1/84	49, 60 2/3, 84	18.0 kgf-cm Max.	54.0 kgf-cm	60%	45.9	233	231
1/104, 1/144	104, 144	20.0 kgf-cm Max.	60.0 kgf-cm	60%	45.9	233	231
1/212, 1/294	212 1/3, 294	25.0 kgf-cm Max.	75.0 kgf-cm	50%	52.6	283	281
1/504, 1/624	504, 624	30.0 kgf-cm Max.	90.0 kgf-cm	50%	52.6	283	281
1/720, 1/864	720, 864	30.0 kgf-cm Max.	90.0 kgf-cm	50%	52.6	283	281
1/1062	1061 2/3	30.0 kgf-cm Max.	90.0 kgf-cm	40%	59.6	328	326
1/1470, 1/2500	1470, 2500	30.0 kgf-cm Max.	90.0 kgf-cm	40%	59.6	328	326
1/3000, 1/3600	3000, 3600	30.0 kgf-cm Max.	90.0 kgf-cm	40%	59.6	328	326