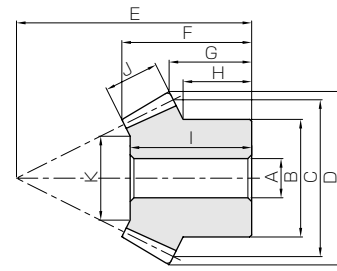




Specifications	
Precision grade	JIS B 1704 grade 3
Gear teeth	Gleason
Pressure angle	20°
Material	SUS303
Heat treatment	—
Tooth hardness	less than 187HB



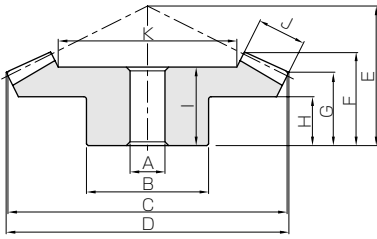
B3

Catalog No.	Gear ratio	Module	No. of teeth	Shape	Bore	Hub dia.	Pitch dia.	Outside dia.	Mounting distance	Total length	Crown to back length	Hub width
					A _{H7}	B	C	D	E	F	G	H
SUB1.5-3020 SUB1.5-2030	1.5	m1.5	30	B4	10	30	45	46.24	28	18.53	13.93	8
			20	B3	8	25	30	33.13	33	18.63	11.54	8.83
SUB2-3020 SUB2-2030		m2	30	B4	10	35	60	61.65	40	26.87	21.24	15
			20	B3	10	35	40	44.18	45	25.06	16.39	13.33
SUB2.5-3020 SUB2.5-2030		m2.5	30	B4	15	45	75	77.07	50	34.22	26.55	18
			20	B3	12	40	50	55.22	55	31.06	19.24	14.16
SUB3-3020 SUB3-2030	m3	30	B4	15	60	90	92.48	55	35.56	26.86	17	
		20	B3	15	50	60	66.27	70	40.48	27.09	21.66	
SUB1.5-4020 SUB1.5-2040	2	m1.5	40	B4	10	38	60	60.88	35	25.01	20.88	15
			20	B3	8	25	30	33.61	46	25.54	16.9	14.75
SUB2-4020 SUB2-2040		m2	40	B4	12	50	80	81.17	45	32.37	26.17	18
			20	B3	12	32	40	44.81	60	34.16	21.2	18
SUB2.5-4020 SUB2.5-2040		m2.5	40	B4	15	60	100	101.46	55	39.73	31.46	20
			20	B3	12	40	50	56.02	75	43.78	26.5	22.5
SUB3-4020 SUB3-2040	m3	40	B4	20	70	120	121.76	65	45.85	36.76	24	
		20	B3	16	50	60	67.22	90	50.81	31.8	27.5	
SUB1.5-4515 SUB1.5-1545	3	m1.5	45	B4	10	36	67.5	68.06	28	20.44	17.59	11
			15	B3	8	18	22.5	26.54	47	23.20	13.92	12.5
SUB2-4515 SUB2-1545		m2	45	B4	12	60	90	90.75	40	30.4	26.12	17
			15	B3	10	24	30	35.35	60	29.8	15.89	14
SUB2.5-4515 SUB2.5-1545		m2.5	45	B4	15	60	112.5	113.43	50	38.35	32.65	22
			15	B3	12	30	37.5	44.18	75	38.41	19.86	17.5
SUB3-4515 SUB3-1545	m3	45	B4	20	80	135	136.12	55	40.74	34.18	20	
		15	B3	15	38	45	53.02	90	45.17	23.84	21.33	

[Caution on Product Characteristics]

- ① The allowable torques shown in the table are the calculated values according to the assumed usage conditions. Please see page 451 for more details.
- ② Dimensions of the outside diameter, the overall length and crown to back length are all theoretical values, and some differences will occur due to the corner chamfering of the gear tips.

Stainless Steel Bevel Gears



B4

Length of bore I	Face width J	Holding surface dia. K	Allowable torque (N·m)		Allowable torque (kgf·m)		Backlash (mm)	Weight (kg)	Catalog No.
			Bending strength	Surface durability	Bending strength	Surface durability			
16 17	9	27.37 17.05	3.22 2.23	0.46 0.31	0.33 0.23	0.047 0.032	0.05~0.15	0.12 0.063	SUB1.5-3020 SUB1.5-2030
23 22	11	37.56 21.34	7.22 5.01	1.08 0.72	0.74 0.51	0.11 0.074	0.06~0.16	0.26 0.16	SUB2-3020 SUB2-2030
30 28	15	45.61 27.42	14.9 10.3	2.28 1.52	1.52 1.05	0.23 0.15	0.07~0.17	0.54 0.28	SUB2.5-3020 SUB2.5-2030
31 37	17	57.14 34.71	24.8 17.2	3.87 2.58	2.53 1.76	0.39 0.26	0.08~0.18	0.94 0.55	SUB3-3020 SUB3-2030
22 24	10	39.64 17.28	5.23 2.64	0.79 0.40	0.53 0.27	0.081 0.040	0.05~0.15	0.27 0.088	SUB1.5-4020 SUB1.5-2040
27 32	15	48.46 20.92	13.4 6.72	2.07 1.04	1.36 0.69	0.21 0.11	0.06~0.16	0.61 0.19	SUB2-4020 SUB2-2040
35 41	20	60.28 24.56	27.1 13.6	4.29 2.15	2.76 1.39	0.44 0.22	0.07~0.17	1.21 0.40	SUB2.5-4020 SUB2.5-2040
38 47	22	73.81 29.61	44.4 22.4	7.19 3.60	4.53 2.28	0.73 0.37	0.08~0.18	1.86 0.69	SUB3-4020 SUB3-2040
17 22.5	10	46.58 14.75	5.70 1.97	0.72 0.24	0.58 0.20	0.074 0.025	0.05~0.15	0.25 0.041	SUB1.5-4515 SUB1.5-1545
26 29	15	59.04 19.13	14.6 5.03	1.90 0.63	1.49 0.51	0.19 0.065	0.06~0.16	0.80 0.095	SUB2-4515 SUB2-1545
35 37	20	72.84 20.51	29.6 10.2	3.94 1.31	3.02 1.04	0.40 0.13	0.07~0.17	1.36 0.19	SUB2.5-4515 SUB2.5-1545
35 43	23	88.18 22.53	49.9 17.2	6.77 2.26	5.09 1.76	0.69 0.23	0.08~0.18	2.32 0.34	SUB3-4515 SUB3-1545

[Caution on Secondary Operations] ① Please read "Caution on Performing Secondary Operations" (Page 452) when performing modifications and/or secondary operations for safety concerns. Haguruma Kobo, the KHK's system for quick modification of KHK stock gears is also available.

Spur
GearsHelical
GearsInternal
Gears

Racks

CP Racks
& PinionsMiter
GearsBevel
GearsScrew
GearsWorm
Gear PairBevel
GearboxesOther
Products