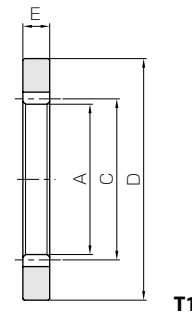


Specifications	
Precision grade	JIS grade N8 (JIS B1702-1: 1998) JIS grade 4 (JIS B1702: 1976)
Gear teeth	Standard full depth
Pressure angle	20°
Material	S45C
Heat treatment	—
Tooth hardness	less than 194HB



Catalog No.	Module	No. of teeth	Shape	Internal dia.				Allowable torque (N·m)		Allowable torque (kgf·m)		Backlash (mm)	Weight (kg)
				A	C	D	E	Bending strength	Surface durability	Bending strength	Surface durability		
SIR2-120 SIR2-200	m2	120	T1	236	240	286	20	413	68.8	42.1	7.02	0.17~0.37	2.98
		200	T1	396	400	446	20	677	110	69.0	11.2	0.20~0.41	4.80
SIR2.5-120 SIR2.5-200	m2.5	120	T1	295	300	355	25	807	138	82.3	14.0	0.19~0.41	5.55
		200	T1	495	500	555	25	1320	220	135	22.5	0.22~0.46	8.94
SIR3-120 SIR3-160	m3	120	T1	354	360	424	30	1390	244	142	24.9	0.22~0.45	9.28
		160	T1	474	480	544	30	1840	315	188	32.1	0.22~0.45	12.1

[Caution on Product Characteristics]

- ① The backlash values shown in the table are the theoretical values for the normal direction for the internal ring in mesh with a 30 tooth SS spur gear.
- ② The allowable torque shown in the table are the calculated values according to the assumed usage conditions. Please see page 366 for more details
- ③ Please check for the involute interference, trochoid interference and trimming interference prior to using internal gears.

[Caution on Secondary Operations]

- ① Please read "Caution on Performing Secondary Operations" (Page 36) when performing modifications and/or secondary operations for safety concerns. Haguruma Kobo, the KHK's system for quick modification of KHK stock gears is also available.
- ② Avoid performing secondary operations that narrow the tooth width as it affects precision and strength.

Spur Gears

Helical Gears

Internal Gears

Racks

CP Racks & Pinions

Miter Gears

Bevel Gears

Screw Gears

Worm Gear Pair

Bevel Gearboxes

Other Products