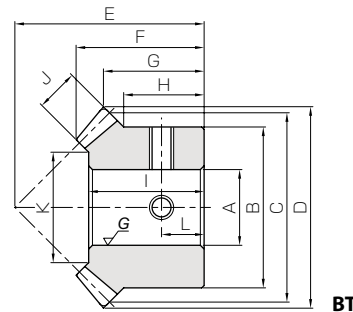




Specifications	
Precision grade	JIS B 1704 grade 4
Gear teeth	Gleason
Pressure angle	20°
Helix angle	35°
Material	SCM415
Heat treatment	Overall carburizing
Tooth hardness	55 ~ 60HRC



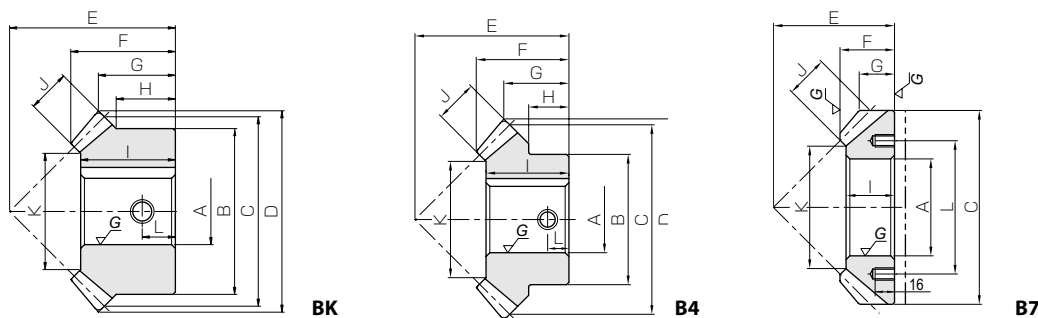
- Spur Gears
- Helical Gears
- Internal Gears
- Racks
- CP Racks & Pinions
- Miter Gears
- Bevel Gears
- Screw Gears
- Worm Gear Pair
- Bevel Gearboxes
- Other Products

Catalog No.	Gear ratio	Module	No. of teeth	Direction of spiral	Shape	Bore	Hub dia.	Pitch dia.	Outside dia.	Mounting distance	Total length	Crown to back length	Hub width	Length of bore
						A _{H7}	B	C	D	E	F	G	H	I
MMSA1-20R MMSB1-20R MMSA1-20L MMSB1-20L	1	m1	20	R	BT	8 10	17	20	21.29	20	13.53	10.64	8.5	12.2
L				BT	8 10									
MMSA1.5-20R MMSB1.5-20R MMSA1.5-20L MMSB1.5-20L		m1.5	20	R	BT BK	10 12	25	30	31.9	28	18.48	13.95	10.5	16.5
L				BT BK	10 12									
MMSA2-20R MMSB2-20R MMSA2-20L MMSB2-20L		m2	20	R	BK	14 16	35	40	42.52	35	22.09	16.26	12.5	20
L				BK	14 16									
MMSA2.5-20R MMSB2.5-20R MMSA2.5-20L MMSB2.5-20L		m2.5	20	R	BK	18 20	42	50	53.2	45	28.63	21.6	16	26
L				BK	18 20									
MMSA3-20R MMSB3-20R MMSA3-20L MMSB3-20L		m3	20	R	BK	20 22	52	60	63.99	50	30.78	21.99	16	27
L				BK	20 22									
MMSA3.5-20R MMSB3.5-20R MMSA3.5-20L MMSB3.5-20L		m3.5	20	R	B4	25 28	50	70	74.53	55	32.45	22.26	14	29
L				B4	25 28									
MMSA4-20R MMSB4-20R MMSA4-20L MMSB4-20L		m4	20	R	B4	28 30	55	80	84.99	65	39.13	27.5	17	35
L				B4	28 30									
MMSA5-20R MMSB5-20R MMSA5-20L MMSB5-20L		m5	20	R	B4	30 35	70	100	106.25	75	42.99	28.13	17	38
L				B4	30 35									
MMSA6-20R MMSB6-20R MMSA6-20L MMSB6-20L	m6	20	R	B4	40 45	80	120	127.59	90	51.13	33.8	20	45	
L			B4	40 45										
MMSA8-20R MMSA8-20L	m8	20	R	B7	80 80	—	160	—	100	45	29.16	—	40	
L			B7	80 80										
MMSA10-20R MMSA10-20L	m10	20	R	B7	100 100	—	200	—	125	58	36.48	—	50	
L			B7	100 100										

[Caution on Product Characteristics]

- ① A sets of miter gears must be identical in module and number of teeth, but opposite in spiral hands.
- ② The allowable torques shown in the table are the calculated values according to the assumed usage conditions. Please see page 421 for more details.
- ③ Dimensions of the outside diameter, the overall length and crown to back length are all theoretical values, and some differences will occur due to the corner chamfering of the gear tips.
- ④ These gears produce axial thrust forces. See page 422 for more details.
- ⑤ Although the dimensions of the keyway are made to the JIS (Js9) tolerance, there may be some deviations due to the effects of heat treatment.
- ⑥ For products having a tapped hole (Except for B7-shaped products), a tapping screw is attached as an accessory.

Finished Bore Spiral Miter Gears

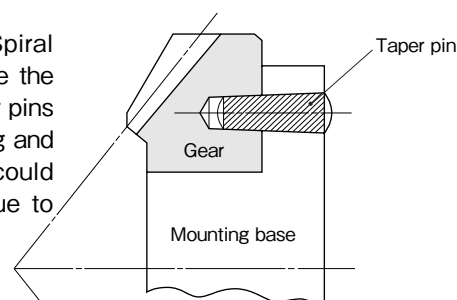


Face width J	Holding surface dia. K	Keyway Width×Depth	Set Screw		Allowable torque (N-m)		Allowable torque (kgf-m)		Backlash (mm)	Weight (kg)	Catalog No.	
			Size	L	Bending strength	Surface durability	Bending strength	Surface durability				
4.5	11.67	—	2-M4	4.5	2.24	2.09	0.23	0.21	0.03~0.13	0.018 0.015	MMSA1-20R MMSB1-20R	
		—	2-M4									
		—	2-M4	4.5								0.018 0.015
		—	2-M4									
7	17.2	—	2-M4	6	7.74	7.34	0.79	0.75	0.05~0.15	0.057 0.052	MMSA1.5-20R MMSB1.5-20R	
		4 x 1.8	M5									
		—	2-M4	6								0.057 0.052
		4 x 1.8	M5									
9	24.54	5 x 2.3	M5	7	18.0	17.3	1.83	1.76	0.06~0.16	0.13 0.12	MMSA2-20R MMSB2-20R	
		5 x 2.3	M5									
		5 x 2.3	M5	7								0.13 0.12
		5 x 2.3	M5									
11	30.89	6 x 2.8	M6	8	34.6	33.7	3.52	3.44	0.07~0.17	0.24 0.23	MMSA2.5-20R MMSB2.5-20R	
		6 x 2.8	M6									
		6 x 2.8	M6	8								0.24 0.23
		6 x 2.8	M6									
14	34.4	6 x 2.8	M6	8	61.9	61.1	6.32	6.23	0.08~0.18	0.40 0.39	MMSA3-20R MMSB3-20R	
		6 x 2.8	M6									
		6 x 2.8	M6	8								0.40 0.39
		6 x 2.8	M6									
16	42.75	8 x 3.3	M8	8	97.1	96.7	9.90	9.86	0.10~0.25	0.46 0.43	MMSA3.5-20R MMSB3.5-20R	
		8 x 3.3	M8									
		8 x 3.3	M8	8								0.46 0.43
		8 x 3.3	M8									
18	49.08	8 x 3.3	M8	9	144	144	14.6	14.7	0.12~0.27	0.70 0.68	MMSA4-20R MMSB4-20R	
		8 x 3.3	M8									
		8 x 3.3	M8	9								0.70 0.68
		8 x 3.3	M8									
23	60.95	8 x 3.3	M8	9	284	288	29.0	29.4	0.14~0.34	1.32 1.25	MMSA5-20R MMSB5-20R	
		10 x 3.3	M8									
		8 x 3.3	M8	9								1.32 1.25
		10 x 3.3	M8									
27	73.63	12 x 3.3	M8	10	475	496	48.4	50.6	0.16~0.36	2.11 1.99	MMSA6-20R MMSB6-20R	
		14 x 3.8	M8									
		12 x 3.3	M8	10								2.11 1.99
		14 x 3.8	M8									
35	101	—	6-M10	110	1080	1170	111	119	0.20~0.45	3.98 3.98	MMSA8-20R MMSA8-20L	
		—	6-M10									
45	122.72	—	6-M10	130	1660	1840	169	188	0.25~0.50	7.88 7.88	MMSA10-20R MMSA10-20L	
		—	6-M10									

[Caution on Secondary Operations]

① These products which are hardened by carburizing allow no secondary machining. However, for B7 type gear, the area surrounded with ---- line (in the illustration) is masked during the carburization process and can be modified. Care should be exercised since the hardness is high (approx. HRC40, maximum).

When installing B7 type (ring type) Spiral Miter Gears to the base, always secure the gears onto the mounting base with taper pins to absorb the rotational loads. Fastening and securing with only mounting screws could possibly cause the screws to snap due to heavy loads.



Spur Gears
Helical Gears
Internal Gears
Racks
CP Racks & Pinions
Miter Gears
Bevel Gears
Screw Gears
Worm Gear Pair
Bevel Gearboxes
Other Products