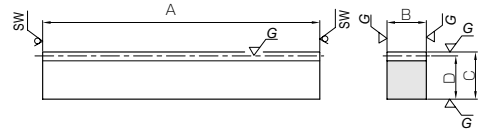




Specifications	
Precision grade	KHK R 001 grade 1
Gear teeth	Standard full depth
Pressure angle	20°
Material	SCM440
Heat treatment	Thermal refining only
Tooth hardness	250 ~ 285HB



\* SW Saw Blade Finished

R1

Catalog No.	Module	Effective no. of teeth	Shape	Total length				Allowable force (N)		Allowable force (kgf)		Weight (kg)
				A	B	C	D	Bending strength	Surface durability	Bending strength	Surface durability	
KRG1-100 KRG1-500	m1	29 159	R1	98 505	10	15	14	1530	641	156	65.3	0.11 0.55
KRG1.5-100 KRG1.5-500	m1.5	20 105	R1	101 505	15	20	18.5	3450	1440	352	147	0.22 1.10
KRG2-100 KRG2-500	m2	14 79	R1	98 505	20	25	23	6130	2560	625	261	0.35 1.82
KRG2.5-100 KRG2.5-500	m2.5	11 63	R1	100 505	25	30	27.5	9580	4010	977	408	0.54 2.73
KRG3-100 KRG3-500	m3	9 52	R1	101 505	30	35	32	13800	5770	1410	588	0.76 3.81

Catalog No.	Module	No. of teeth	Shape	Total length				Allowable force (N)		Allowable force (kgf)		Weight (kg)
				A	B	C	D	Bending strength	Surface durability	Bending strength	Surface durability	
KRGF1-1000	m1	318	RF	999.03	10	15	14	1530	641	156	65.3	1.49
KRGF1.5-1000	m1.5	212	RF	999.03	15	20	18.5	3450	1440	352	147	2.18
KRGF2-1000	m2	160	RF	1005.31	20	25	23	6130	2560	625	261	3.63
KRGF2.5-1000	m2.5	128	RF	1005.31	25	30	27.5	9580	4010	977	408	5.43
KRGF3-1000	m3	106	RF	999.03	30	35	32	13800	5770	1410	588	7.53

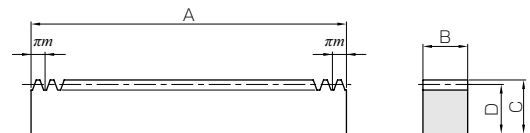
Catalog No.	Module	No. of teeth	Shape	Total length				Height to pitch line	Mounting hole dimensions			No. of mounting holes	Mounting screw size
				A	B	C	D		E	F	G		
KRGD1-500	m1	159	RD	499.51	10	15	14	6	39.75	140	4	M4	
KRGD1.5-500	m1.5	106	RD	499.51	15	20	18.5	8	39.75	140	4	M5	
KRGD2-500	m2	80	RD	502.65	20	25	23	10	41.32	140	4	M6	
KRGD2.5-500	m2.5	64	RD	502.65	25	30	27.5	12	41.32	140	4	M8	
KRGD3-500	m3	53	RD	499.51	30	35	32	14	39.75	140	4	M10	



KRF  
Thermal Refined Racks with Machined Ends



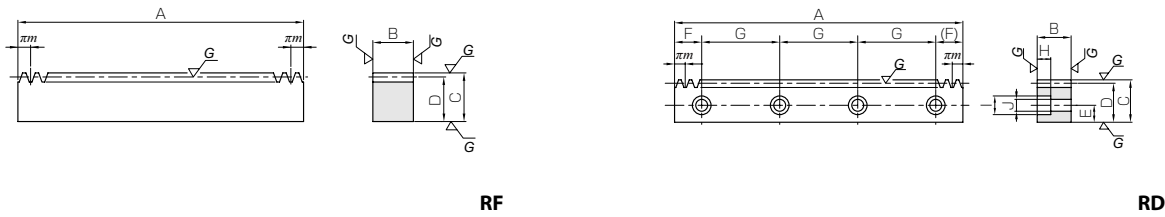
Specifications	
Precision grade	KHK R 001 grade 4
Gear teeth	Standard full depth
Pressure angle	20°
Material	SCM440
Heat treatment	Thermal refining only
Tooth hardness	250 ~ 285HB*



\* Due to the decarburization layer of about 0.5 mm thickness, the rectangular surface have less than HB187 hardness.

RF

Catalog No.	Module	No. of teeth	Shape	Total length				Allowable force (N)		Allowable force (kgf)		Weight (kg)
				A	B	C	D	Bending strength	Surface durability	Bending strength	Surface durability	
KRF1.5-1000	m1.5	212	RF	999.03	15	20	18.5	3450	953	352	97.2	2.18
KRF2-1000	m2	160	RF	1005.31	20	25	23	6130	1760	625	179	3.63
KRF2.5-1000	m2.5	128	RF	1005.31	25	30	27.5	9580	2810	977	287	5.43
KRF3-1000	m3	106	RF	999.03	30	35	32	13800	4120	1410	421	7.53
KRF4-1000	m4	80	RF	1005.31	40	45	41	24500	7530	2500	768	12.9
KRF5-1000	m5	64	RF	1005.31	50	50	45	38300	12000	3910	1220	17.8



**\* Ground racks with these specifications: Module 8, Total length (A) 1000 mm, Height (C) 90 mm or less, are also available by request as custom-made products.**

- [Caution on Product Characteristics]
- ① The allowable forces shown in the table are the calculated values according to the assumed usage conditions. Please see page 373 for more details.
  - ② The backlash of racks differ depending on the size of the mating pinion. Please calculate the backlash from the backlash value of the mating pinion. Also, please refer to the data in the section called 'Backlash of Rack Tooth (Amount of Tooth Thinning)' on Page 375.
  - ③ After attaching the racks to the base, please fasten with dowel pins. Clamping only with mounting screws could possibly cause the screws to be broken, due to a heavy load.
- [Caution on Secondary Operations]
- ① Please read "Caution on Performing Secondary Operations" (Page 376) when performing modifications and/or secondary operations for safety concerns. Haguruma Kobo, the KHK's system for quick modification of KHK stock gears is also available.

Counterbore dimensions			Allowable force (N)		Allowable force (kgf)		Weight (kg)	Catalog No.
H	I	J	Bending strength	Surface durability	Bending strength	Surface durability		
5	8	4.5	1530	641	156	65.3	0.54	<b>KRGD1-500</b> <b>KRGD1.5-500</b> <b>KRGD2-500</b> <b>KRGD2.5-500</b> <b>KRGD3-500</b>
6	10	6	3450	1440	352	147	1.06	
7	11	7	6130	2560	625	261	1.77	
8.6	14	9	9580	4010	977	408	2.62	
10.8	17.5	11	13800	5770	1410	588	3.59	

KRF

Racks with Machined Ends

- [Caution on Product Characteristics]
- ① The allowable forces shown in the table are the calculated values according to the assumed usage conditions. Please see page 373 for more details.
  - ② The backlash of racks differ depending on the size of the mating pinion. Please calculate the backlash from the backlash value of the mating pinion. Also, please refer to the data in the section called 'Backlash of Rack Tooth (Amount of Tooth Thinning)' on Page 375.
- [Caution on Secondary Operations]
- ① Please read "Caution on Performing Secondary Operations" (Page 376) when performing modifications and/or secondary operations for safety concerns. Haguruma Kobo, the KHK's system for quick modification of KHK stock gears is also available.
  - ② If gear tooth hardening, or thermal refining, is applied, the decarburization layer (approx. 0.5 mm thickness) on the rectangular surfaces cannot have the hardness you designate.