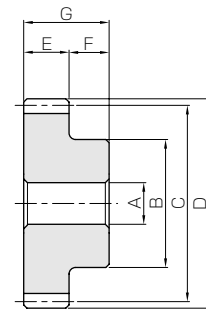




Specifications	
Precision grade	JIS grade N9 (JIS B1702-1: 1998) JIS grade 5 (JIS B1702: 1976)
Reference section of gear	Normal plane
Gear teeth	Standard full depth
Normal pressure angle	20°
Helix angle	45°
Material	CAC702 (formerly JIS A8BC2)
Heat treatment	—



S1

Catalog No.	Module	No. of teeth	Direction of helix	Shape	Bore	Hub dia.	Pitch dia.	Outside dia.	Face width	Hub width	Total length
					A _{H7}	B	C	D	E	F	G
AN1-13R AN1-13L	m1	13	R L	S1	6	15	18.38	20.38	10	10	20
AN1-15R AN1-15L		15	R L	S1	6	18	21.21	23.21	10	10	20
AN1.5-10R AN1.5-10L	m1.5	10	R L	S1	8	16	21.21	24.21	15	10	25
AN1.5-13R AN1.5-13L		13	R L	S1	10	23	27.58	30.58	15	10	25
AN1.5-15R AN1.5-15L		15	R L	S1	10	25	31.82	34.82	15	10	25
AN2-10R AN2-10L	m2	10	R L	S1	12	22	28.28	32.28	20	15	35
AN2-13R AN2-13L		13	R L	S1	12	30	36.77	40.77	20	15	35
AN2-15R AN2-15L		15	R L	S1	12	35	42.43	46.43	20	15	35
AN2.5-10R AN2.5-10L	m2.5	10	R L	S1	12	26	35.36	40.36	22	16	38
AN2.5-13R AN2.5-13L		13	R L	S1	15	35	45.96	50.96	22	16	38
AN2.5-15R AN2.5-15L		15	R L	S1	15	40	53.03	58.03	22	16	38
AN3-10R AN3-10L	m3	10	R L	S1	15	34	42.43	48.43	25	18	43
AN3-13R AN3-13L		13	R L	S1	20	45	55.15	61.15	25	18	43
AN3-15R AN3-15L		15	R L	S1	20	50	63.64	69.64	25	18	43
AN4-10R AN4-10L	m4	10	R L	S1	20	45	56.57	64.57	30	20	50
AN4-13R AN4-13L		13	R L	S1	20	60	73.54	81.54	30	20	50
AN4-15R AN4-15L		15	R L	S1	20	70	84.85	92.85	30	20	50

[Caution on Product Characteristics]

- ① When mating screw gears made of the same material they may cause abrasion and scoring. It is recommended to mate Screw Gears composed of different materials.
- ② The allowable torques shown in the table are the calculated values according to the assumed usage conditions. Please see page 495 for more details.
- ③ The backlash values shown in the table are the theoretical values for the backlash in the normal direction of a pair of identical gears in mesh.
- ④ For offset shaft applications, match a RH with a RH, or LH with a LH, to make a set of screw gears. For parallel shaft applications, mesh opposite hands (RH and LH) of helical gear sets. See page 494 for more details.
- ⑤ If the bore diameter is less than $\phi 4$, then the bore tolerance class is H8. If the bore diameter is $\phi 5$ or $\phi 6$, and the hole length (total length) exceeds 3 times the diameter, then the class is also H8.

Aluminum-Bronze Screw Gears

Allowable torque (N·m)		Allowable torque (kgf·m)		Backlash (mm)	Weight (kg)	Catalog No.
Bending strength	Surface durability	Bending strength	Surface durability			
—	0.31	—	0.032	0.08~0.18	0.029	AN1-13R AN1-13L
—	0.48	—	0.049	0.08~0.18	0.042	AN1-15R AN1-15L
—	0.48	—	0.049	0.08~0.20	0.046	AN1.5-10R AN1.5-10L
—	1.03	—	0.10	0.10~0.22	0.085	AN1.5-13R AN1.5-13L
—	1.55	—	0.16	0.10~0.22	0.11	AN1.5-15R AN1.5-15L
—	1.10	—	0.11	0.10~0.22	0.11	AN2-10R AN2-10L
—	2.36	—	0.24	0.12~0.26	0.21	AN2-13R AN2-13L
—	3.56	—	0.36	0.12~0.26	0.29	AN2-15R AN2-15L
—	2.11	—	0.22	0.12~0.24	0.20	AN2.5-10R AN2.5-10L
—	4.47	—	0.46	0.14~0.28	0.34	AN2.5-13R AN2.5-13L
—	6.72	—	0.69	0.14~0.28	0.47	AN2.5-15R AN2.5-15L
—	3.56	—	0.36	0.12~0.26	0.34	AN3-10R AN3-10L
—	7.51	—	0.77	0.14~0.32	0.57	AN3-13R AN3-13L
—	11.3	—	1.15	0.14~0.32	0.77	AN3-15R AN3-15L
—	8.07	—	0.82	0.16~0.34	0.70	AN4-10R AN4-10L
—	16.9	—	1.72	0.18~0.38	1.28	AN4-13R AN4-13L
—	25.1	—	2.56	0.18~0.38	1.75	AN4-15R AN4-15L

[Caution on Secondary Operations] ① Please read “Caution on Performing Secondary Operations” (Page 36) when performing modifications and/or secondary operations for safety concerns. Haguruma Kobo, the KHK’s system for quick modification of KHK stock gears is also available.

② Avoid performing secondary operations that narrow the tooth width, as it affects precision and strength.

Spur
GearsHelical
GearsInternal
Gears

Racks

CP Racks
& PinionsMiter
GearsBevel
GearsScrew
GearsWorm
Gear PairBevel
GearboxesOther
Products