



CATALOGUE

HYBRID STEPPING MOTOR HYBRID STEPPING GEARMOTOR

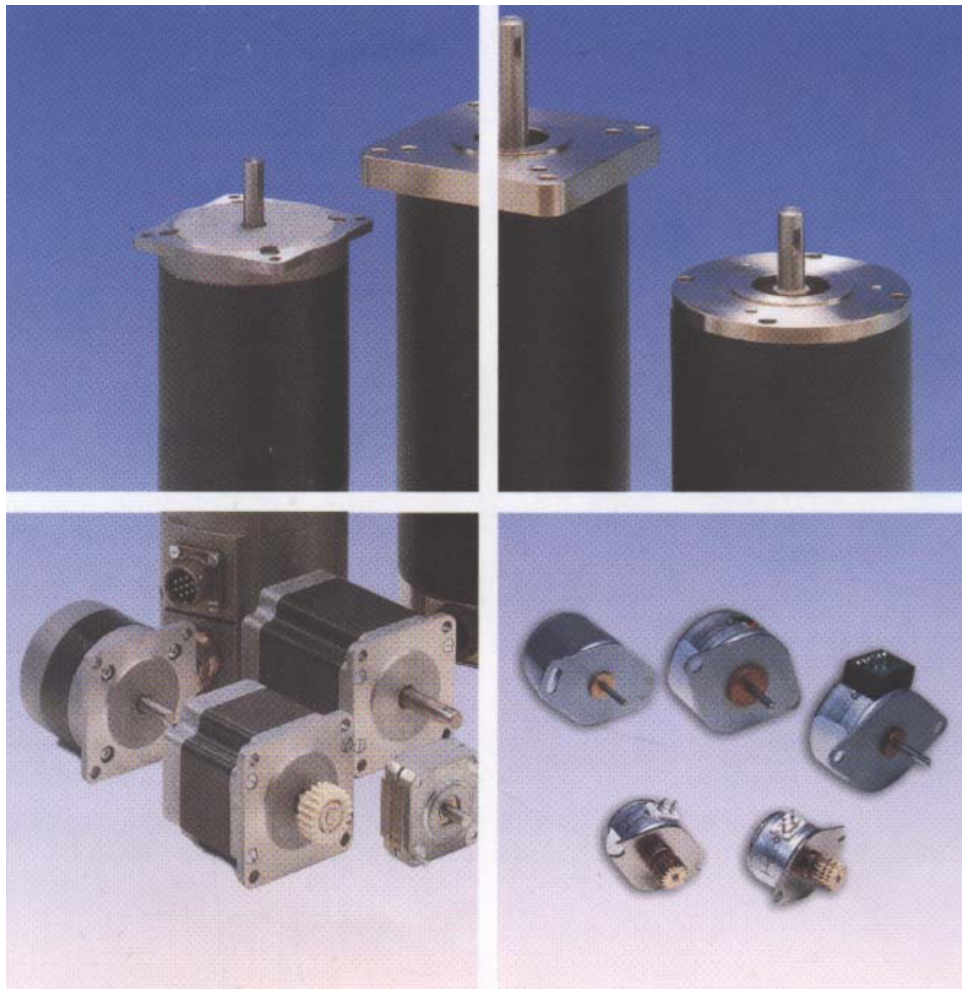




TABLE OF CONTENTS

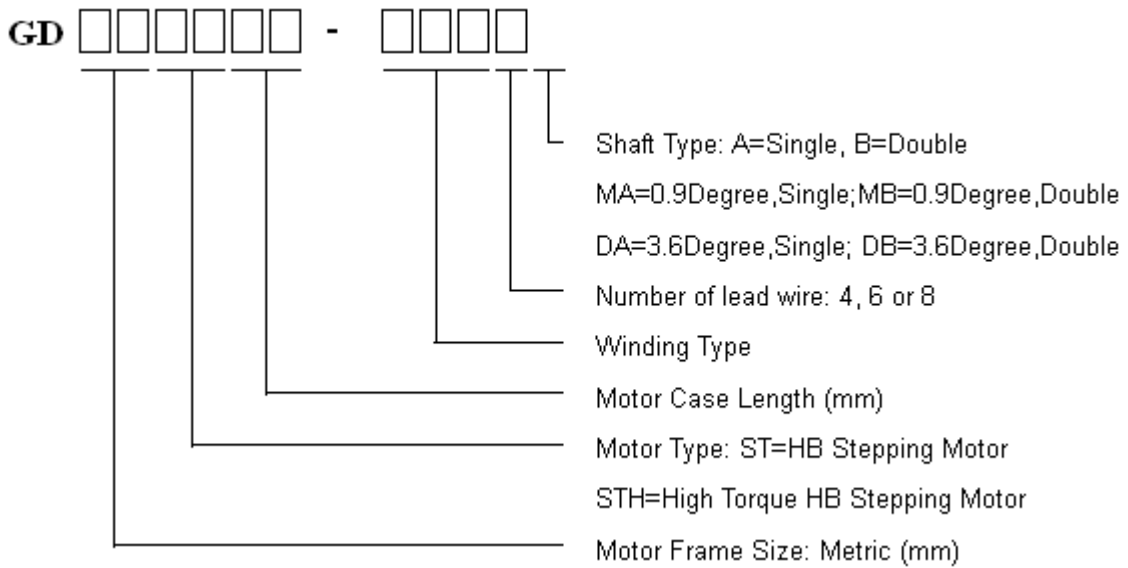
General Information, Marking	3
1.8° Size 20mm High Torque Hybrid Stepping Motor	4
1.8° Size 28mm High Torque Hybrid Stepping Motor	5
1.8° Size 35mm Hybrid Stepping Motor	6
1.8° Size 39mm Hybrid Stepping Motor	7
0.9° Size 42mm High Torque Hybrid Stepping Motor	8
1.8° Size 42mm High Torque Hybrid Stepping Motor	9
1.8° Size 42mm High Torque Hybrid Stepping Motor With Thread Shaft	10
3.6° Size 42mm Hybrid Stepping Motor	11
0.9° Size 57mm High torque Hybrid Stepping Motors	12
1.8° Size 57mm Hybrid Stepping Motor	13
1.8° Size 57mm High Torque Hybrid Stepping Motor	14
1.8° Size 60mm High Torque Hybrid Stepping Motor	15
1.8° Size 86mm Hybrid Stepping Motor	16
1.8° Size 86mm High Torque Hybrid Stepping Motor	17
1.8° Size 110mm High Torque Hybrid Stepping Motor	20
1.8° and 0.9° or 0.72° and 0.36° Size 110mm Hybrid Stepping Motor	21
Size 57mm 3-Phase Hybrid Stepping Motor	22
Size 86mm 3-Phase Hybrid Stepping Motor	23
Size 110mm 3-Phase Hybrid Stepping Motor	24
GD57STHJB Gearbox Stepping Motor	25
GD86STHJB Gearbox Stepping Motor	25
Order & Contact Info	26



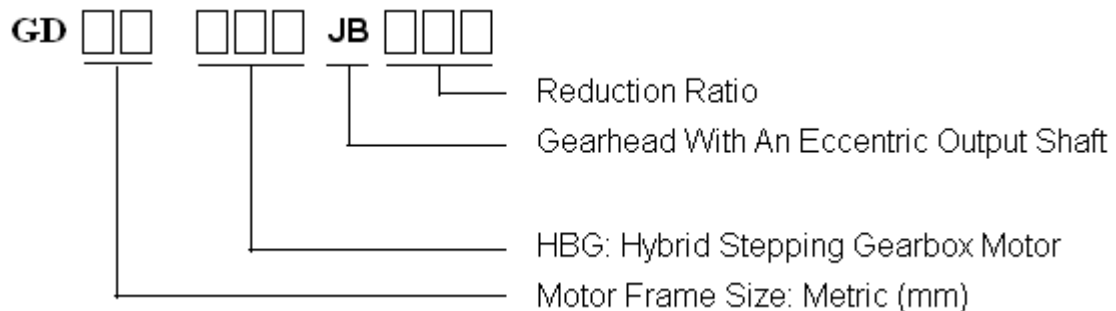
HYBRID STEPPING MOTOR & HYBRID STEPPING GEARMOTOR



PRODUCT NUMBER CODE FOR HYBRID STEPPING MOTOR



PRODUCT NUMBER CODE FOR HYBRID STEPPING GEARMOTOR





1.8° SIZE 20mm HIGH TORQUE HYBRID STEPPING MOTOR

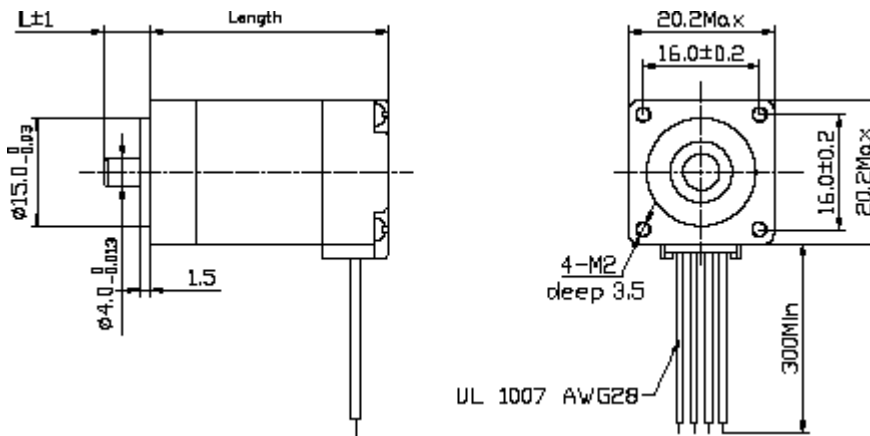
GENERAL SPECIFICATION FOR HIGH TORQUE HYBRID STEPPING MOTOR

Item	Specifications
Step Angle	1.8°
Step Angle Accuracy	±5% (full step, no load)
Resistance Accuracy	±10%
Inductance Accuracy	±20%
Temperature Rise	80°C Max (rated current, 2 phase on)
Ambient Temperature	-20°C ~ +50°C
Insulation Resistance	100MΩ Min, 500VDC
Dielectric Strength	500VAC for one minute
Shaft Radial Play	0.02Max (450 g-load)
Shaft Axial Play	0.08Max (450 g-load)
Rotation	CW (See from Front Flange)

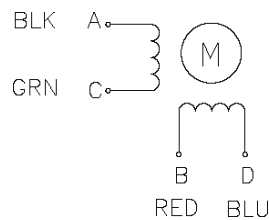
SIZE 20mm HIGH TORQUE HYBRID STEPPING MOTOR SPECIFICATIONS

Model No.	Rated Voltage	Current /Phase	Resistance /Phase	Inductance /Phase	Holding Torque	# of Leads	Rotor Inertia	Weight	Length
Single Shaft	V	A	Ω	mH	g.cm		kg-cm ²	kg	mm
GD20STH30-0604A	3.9	0.6	6.5	1.7	180	4	2.0x10 ⁻⁷	0.06	30
GD20STH33-0604A	3.9	0.6	6.5	1.7	180	4	2.0x10 ⁻⁷	0.06	33
GD20STH42-0604A	4.32	0.8	5.4	1.5	300	4	3.6x10 ⁻⁷	0.08	42

DIMENSIONS



WIRING DIAGRAM





1.8° SIZE 28mm HIGH TORQUE HYBRID STEPPING MOTOR

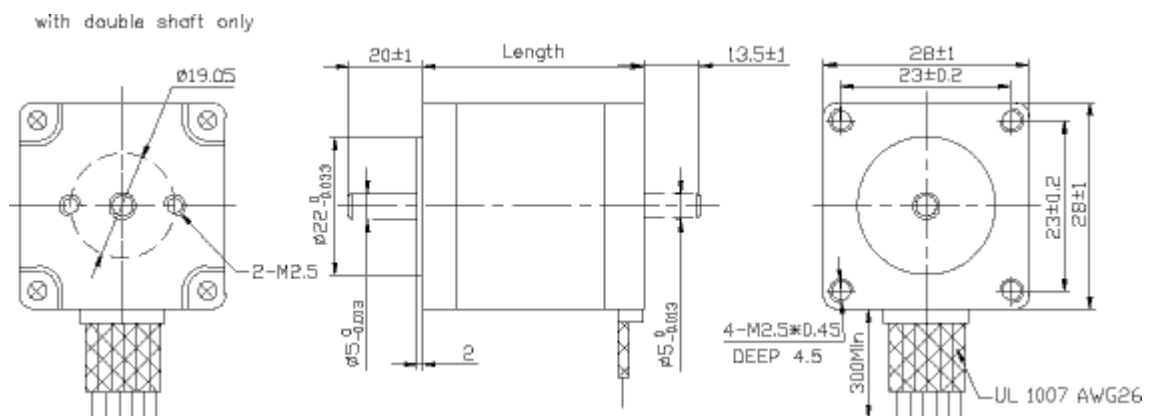
GENERAL SPECIFICATION FOR HIGH TORQUE HYBRID STEPPING MOTOR

Item	Specifications
Step Angle	1.8°
Step Angle Accuracy	±5% (full step, no load)
Resistance Accuracy	±10%
Inductance Accuracy	±20%
Temperature Rise	80°C Max (rated current, 2 phase on)
Ambient Temperature	-20°C ~ +50°C
Insulation Resistance	100MΩ Min, 500VDC
Dielectric Strength	500VAC for one minute
Shaft Radial Play	0.02Max (450 g-load)
Shaft Axial Play	0.08Max (450 g-load)
Max. radial force	28N (20mm from the flange)
Max. axial force	10N
Rotation	CW (See from Front Flange)

SIZE 28mm HIGH TORQUE HYBRID STEPPING MOTOR SPECIFICATIONS

Model No.		Rated Voltage	Resistance /Phase	Inductance /Phase	Holding Torque	# of Leads	Rotor Inertia	Weight	Length
Single Shaft	Double Shaft	V	Ω	mH	g. cm		kg-m ²	kg	mm
GD28STH32-0956A	GD28STH32-0956B	2.66	2.8	1	430	6	9x10 ⁻⁷	0.11	31.5
GD28STH32-0674A	GD28STH32-0674B	3.8	5.6	4.2	600	4			
GD28STH45-0956A	GD28STH45-0956B	3.4	3.4	1.2	750	6	12x10 ⁻⁷	0.14	44.5
GD28STH45-0674A	GD28STH45-0674B	4.56	6.8	4.9	950	4			
GD28STH51-0956A	GD28STH51-0956B	4.4	4.6	1.8	900	6	18x10 ⁻⁷	0.2	50.5
GD28STH51-0674A	GD28STH51-0674B	6.2	9.2	7.2	1200	4			

DIMENSIONS



WIRING DIAGRAM





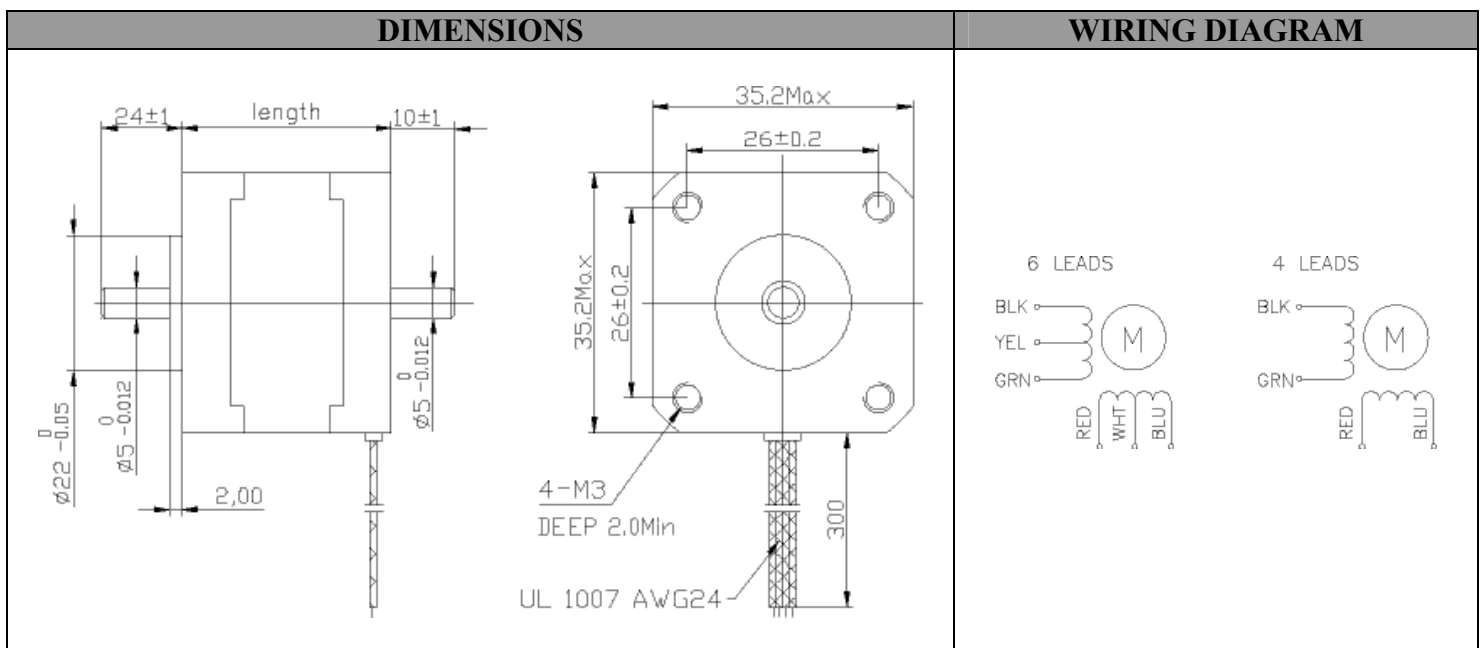
1.8° SIZE 35mm HYBRID STEPPING MOTOR

GENERAL SPECIFICATION FOR HYBRID STEPPING MOTOR

Item	Specifications
Step Angle	1.8°
Step Angle Accuracy	±5% (full step, no load)
Resistance Accuracy	±10%
Inductance Accuracy	±20%
Temperature Rise	80°C Max (rated current, 2 phase on)
Ambient Temperature	-20°C ~ +50°C
Insulation Resistance	100MΩ Min, 500VDC
Dielectric Strength	500VAC for one minute
Shaft Radial Play	0.02Max (450 g-load)
Shaft Axial Play	0.08Max (450 g-load)
Max. radial force	28N (20mm from the flange)
Max. axial force	10N
Rotation	CW (See from Front Flange)

SIZE 35mm HYBRID STEPPING MOTOR SPECIFICATIONS

Model No.		Rated Voltage	Current /Phase	Resistance /Phase	Inductance /Phase	Holding Torque	# of Leads	Rotor Inertia	Weight	Detent Torque	Length
Single Shaft	Double Shaft	V	A	Ω	mH	g. cm		g-cm ²	kg	g-cm	mm
GD35ST22-0804A	GD35ST22-0804B	3.2	0.8	4	2.3	500	4	8	0.10	60	22
GD35ST26-0284A	GD35ST26-0284B	7.4	0.28	26	19.2	650	4	10	0.13	60	26
GD35ST28-0504A	GD35ST28-0504B	10	0.5	20	13.5	1000	4	10	0.14	80	28
GD35ST28-0406A	GD35ST28-0406B	11.2	0.4	28	10	500	6				
GD35ST36-0704A	GD35ST36-0704B	1.4	0.7	2	2.9	920	4	14	0.18	100	36
GD35ST36-1004A	GD35ST36-1004B	2.7	1.0	2.7	4.3	1400	4				





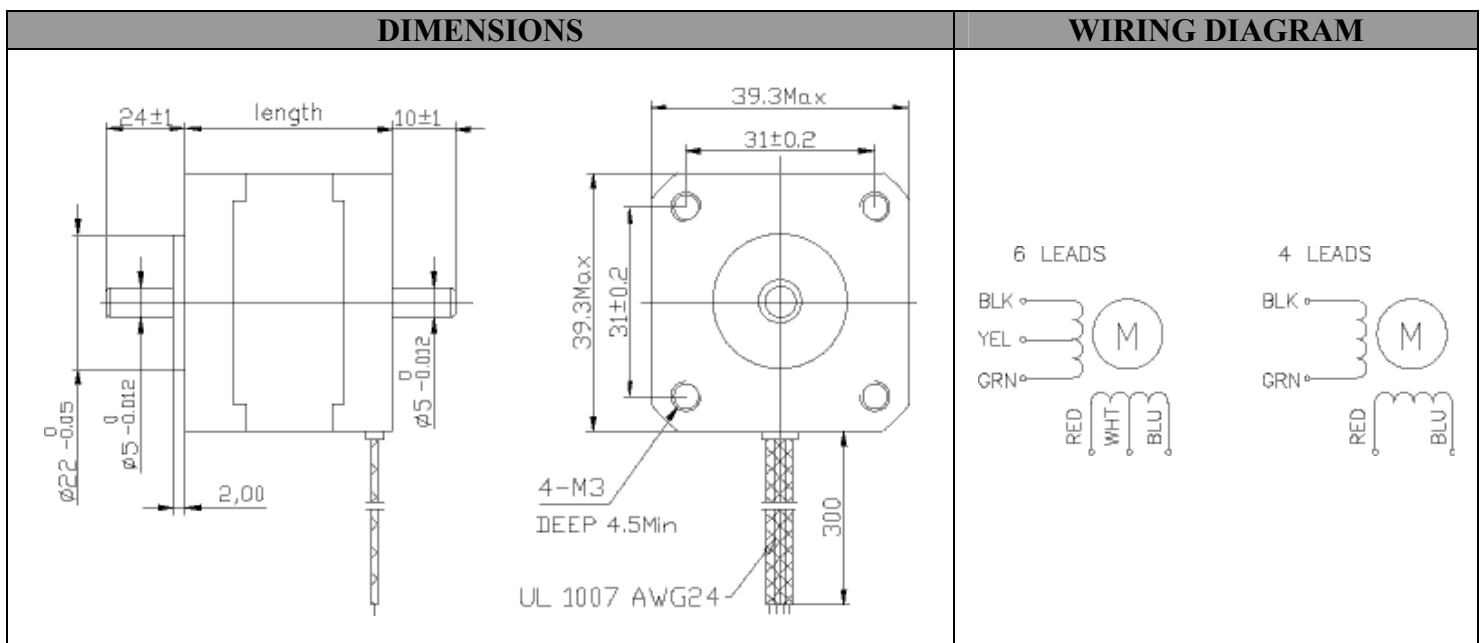
1.8° SIZE 39mm HYBRID STEPPING MOTOR

GENERAL SPECIFICATION FOR HYBRID STEPPING MOTOR

Item	Specifications
Step Angle	1.8°
Step Angle Accuracy	±5% (full step, no load)
Resistance Accuracy	±10%
Inductance Accuracy	±20%
Temperature Rise	80°C Max (rated current, 2 phase on)
Ambient Temperature	-20°C ~ +50°C
Insulation Resistance	100MΩ Min, 500VDC
Dielectric Strength	500VAC for one minute
Shaft Radial Play	0.02Max (450 g-load)
Shaft Axial Play	0.08Max (450 g-load)
Max. radial force	28N (20mm from the flange)
Max. axial force	10N
Rotation	CW (See from Front Flange)

SIZE 39mm HYBRID STEPPING MOTOR SPECIFICATIONS

Model No.		Rated Voltage	Current /Phase	Resistance /Phase	Inductance /Phase	Holding Torque	# of Leads	Rotor Inertia	Weight	Detent Torque	Length
Single Shaft	Double Shaft	V	A	Ω	mH	g. cm		g-cm ²	kg	g-cm	mm
GD39ST20-0404A	GD39ST20-0404B	2.64	0.4	6.6	7.5	650	4	11	0.12	50	20
GD39ST20-0506A	GD39ST20-0506B	6.5	0.5	13	7.5	800	6	20	0.18	120	34
GD39ST34-0654A	GD39ST34-0654B	4.55	0.65	7.0	9.3	1800	4				
GD39ST34-0404A	GD39ST34-0404B	12	0.4	30	32	2100	4				
GD39ST34-0604A	GD39ST34-0604B	9	0.6	15	16	2200	4				
GD39ST34-0306A	GD39ST34-0306B	12	0.3	40	20	1300	6				
GD39ST34-0166A	GD39ST34-0166B	12	0.16	75	50	1100	6				
GD39ST38-0504A	GD39ST38-0504B	12	0.5	24	45	2900	4	24	0.2	180	38
GD39ST38-0806A	GD39ST38-0806B	6	0.8	7.5	6	2000	6	40	0.25	250	44
GD39ST44-0304A	GD39ST44-0304B	12	0.8	40	100	2800	4				





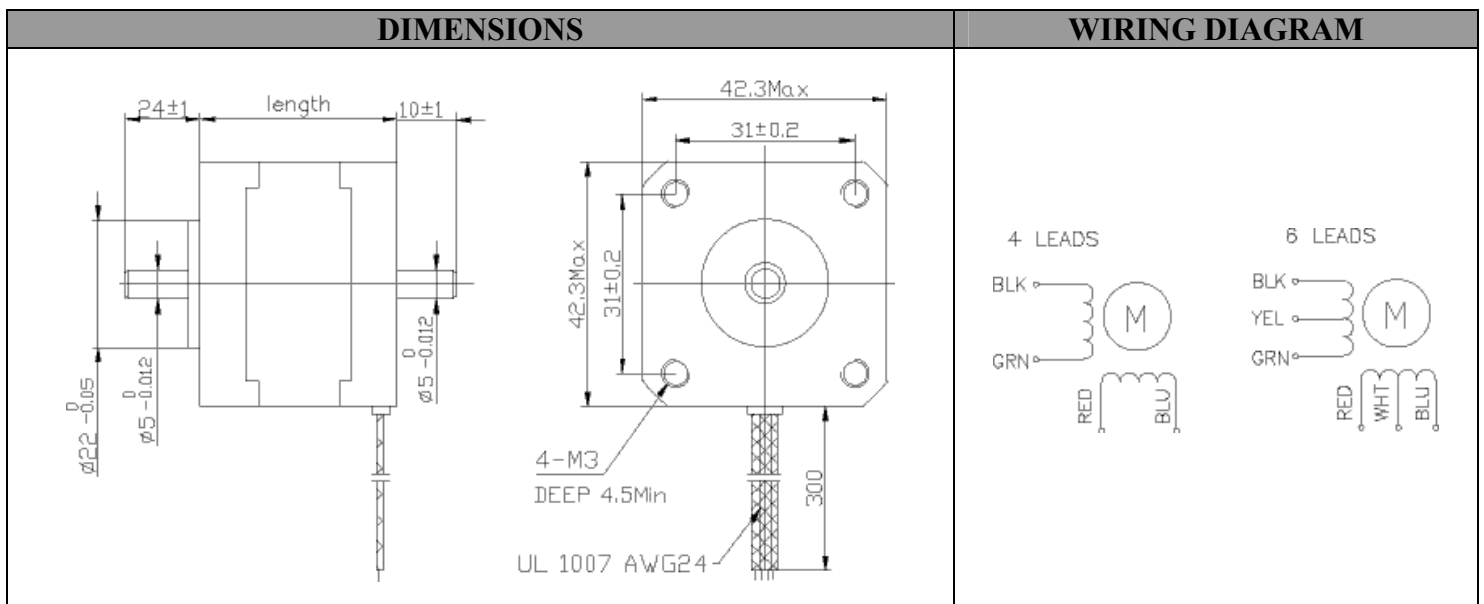
0.9° SIZE 42mm HIGH TORQUE HYBRID STEPPING MOTOR

GENERAL SPECIFICATION FOR HIGH TORQUE HYBRID STEPPING MOTOR

Item	Specifications
Step Angle	0.9°
Step Angle Accuracy	±5% (full step, no load)
Resistance Accuracy	±10%
Inductance Accuracy	±20%
Temperature Rise	80°C Max (rated current, 2 phase on)
Ambient Temperature	-20°C ~ +50°C
Insulation Resistance	100MΩ Min, 500VDC
Dielectric Strength	500VAC for one minute
Shaft Radial Play	0.02Max (450 g-load)
Shaft Axial Play	0.08Max (450 g-load)
Max. radial force	28N (20mm from the flange)
Max. axial force	10N
Rotation	CW (See from Front Flange)

SIZE 42mm HIGH TORQUE HYBRID STEPPING MOTOR SPECIFICATIONS

Model No.		Rated Voltage	Current /Phase	Resistance /Phase	Inductance /Phase	Holding Torque	# of Leads	Rotor Inertia	Weight	Detent Torque	Length
Single Shaft	Double Shaft	V	A	Ω	mH	g. cm		g-cm ²	kg	g-cm	mm
GD42STH33-0956MA	GD42STH33-0956MB	4	0.95	4.2	4	1.58	6	35	0.22	200	33
GD42STH33-0606MA	GD42STH33-0606MB	6	0.6	10	9.5						
GD42STH33-0316MA	GD42STH33-0316MB	12	0.31	38.5	33						
GD42STH33-1334MA	GD42STH33-1334MB	2.8	1.33	2.1	4.2	2.2	4	54	0.28	220	38
GD42STH38-1206MA	GD42STH38-1206MB	4	1.2	3.3	3.2	2.59	6				
GD42STH38-0806MA	GD42STH38-0806MB	6	0.8	7.5	6.7						
GD42STH38-0404MA	GD42STH38-0404MB	12	0.4	30	30						
GD42STH38-1684MA	GD42STH38-1684MB	2.8	1.68	1.65	3.2	3.6	4				
GD42STH47-1206MA	GD42STH47-1206MB	4	1.2	3.3	4	3.17	6				
GD42STH47-0806MA	GD42STH47-0806MB	6	0.8	7.5	6.3						
GD42STH47-0406MA	GD42STH47-0406MB	12	0.4	30	38						
GD42STH47-1684MA	GD42STH47-1684MB	2.8	1.68	1.65	4.1						





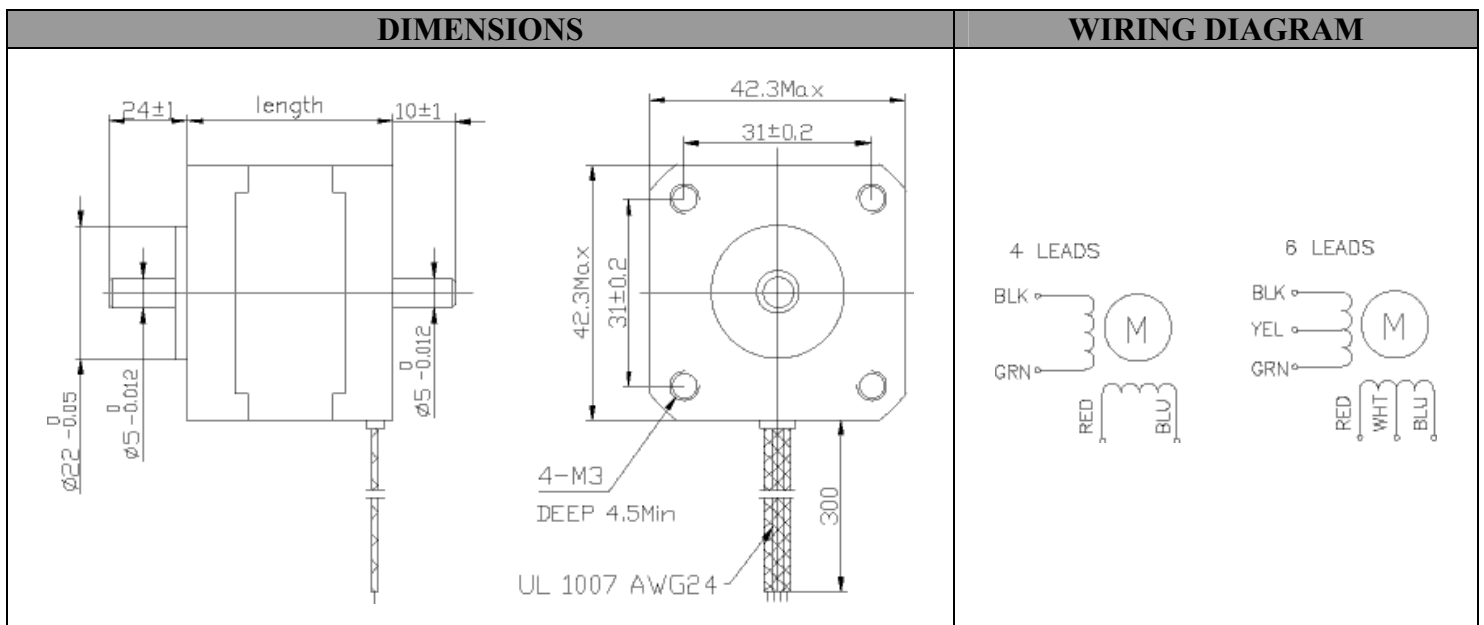
1.8° SIZE 42mm HIGH TORQUE HYBRID STEPPING MOTOR

GENERAL SPECIFICATION FOR HIGH TORQUE HYBRID STEPPING MOTOR

Item	Specifications
Step Angle	1.8°
Step Angle Accuracy	±5% (full step, no load)
Resistance Accuracy	±10%
Inductance Accuracy	±20%
Temperature Rise	80°C Max (rated current, 2 phase on)
Ambient Temperature	-20°C ~ +50°C
Insulation Resistance	100MΩ Min, 500VDC
Dielectric Strength	500VAC for one minute
Shaft Radial Play	0.02Max (450 g-load)
Shaft Axial Play	0.08Max (450 g-load)
Max. radial force	28N (20mm from the flange)
Max. axial force	10N
Rotation	CW (See from Front Flange)

SIZE 42mm HIGH TORQUE HYBRID STEPPING MOTOR SPECIFICATIONS

Model No.		Rated Voltage	Current /Phase	Resistance /Phase	Inductance /Phase	Holding Torque	# of Leads	Rotor Inertia	Weight	Detent Torque	Length
Single Shaft	Double Shaft	V	A	Ω	mH	Kg. cm		g-cm ²	kg	g-cm	mm
GD42STH25-0404A	GD42STH25-0404B	9.6	0.4	24	36	1.7	4	20	0.15	200	25
GD42STH33-0404A	GD42STH34-0404B	12	0.4	30	37	2.5	4	38	0.2	120	34
GD42STH33-0956A	GD42STH34-0956B	3.99	0.95	4.2	2.8	1.6	6				
GD42STH33-0476A	GD42STH34-0476B	6.392	0.47	13.6	9.8						
GD42STH38-0406A	GD42STH38-0406B	12	0.4	30	24	2.5	6	57	0.24	150	40
GD42STH38-0804A	GD42STH38-0804B	8	0.8	10	17	3.2	4				
GD42STH38-1206A	GD42STH38-1206B	3.96	1.2	3.3	2.4	2.4	6				
GD42STH38-0806A	GD42STH38-0806B	6.0	0.8	7.5	7.0	2.8	6				
GD42STH47-1006A	GD42STH48-1006B	4.6	1.0	4.6	4.0	3.4	6	82	0.34	200	48
GD42STH47-0406A	GD42STH48-0406B	12	0.4	30	28	3.8	6				
GD42STH47-1204A	GD42STH48-1204B	3.84	1.2	3.2	6.0	4.5	4				
GD42STH47-0854A	GD42STH48-0854B	5.61	0.85	6.6	11						





1.8° SIZE 42mm HIGH TORQUE HYBRID STEPPING MOTOR WITH THREAD SHAFT

GENERAL SPECIFICATION FOR HIGH TORQUE HYBRID STEPPING MOTOR WITH THREAD

Item	Specifications
Step Angle	1.8°
Step Angle Accuracy	±5% (full step, no load)
Resistance Accuracy	±10%
Inductance Accuracy	±20%
Temperature Rise	80°C Max (rated current, 2 phase on)
Ambient Temperature	-20°C ~ +50°C
Insulation Resistance	100MΩ Min, 500VDC
Dielectric Strength	500VAC for one minute
Shaft Radial Play	0.02Max (450 g-load)
Shaft Axial Play	0.08Max (450 g-load)
Max. radial force	28N (20mm from the flange)
Max. axial force	10N
Rotation	CW (See from Front Flange)

SIZE 42mm HIGH TORQUE HYBRID STEPPING MOTOR SPECIFICATIONS WITH THREAD

Model No.	Rated Voltage	Current /Phase	Resistance /Phase	Inductance /Phase	Holding Torque	# of Leads	Rotor Inertia	Weight	Detent Torque	Length
Single Shaft	V	A	Ω	mH	g. cm		g-cm ²	kg	g-cm	mm
GD42STH33T-0554A	1.8	0.55	3.2	4.5	900	4	35	0.2	120	34
GD42STH33S-0956A	4.0	0.95	4.2	2.5	1580	6	35	0.2	120	34

DIMENSIONS	WIRING DIAGRAM



3.6° SIZE 42mm HYBRID STEPPING MOTOR

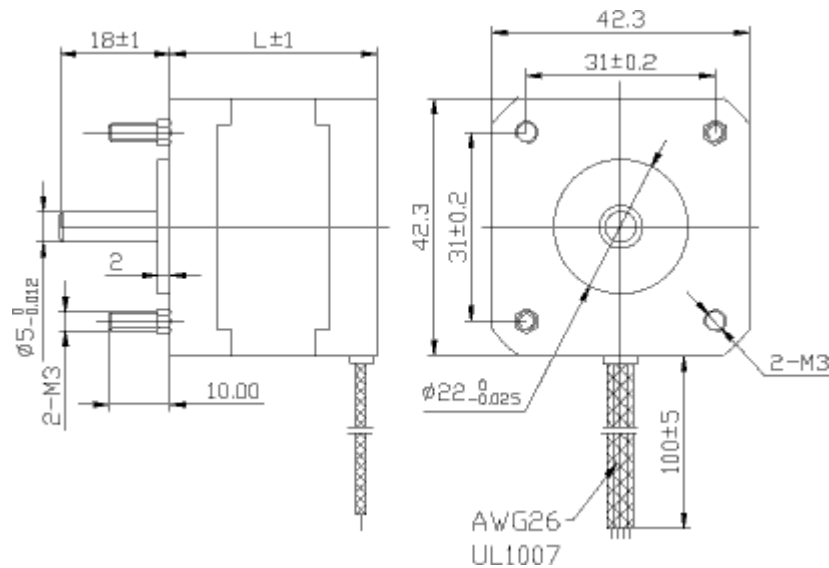
GENERAL SPECIFICATION FOR HIGH TORQUE HYBRID STEPPING MOTOR

Item	Specifications
Step Angle	3.6°
Step Angle Accuracy	±5% (full step, no load)
Resistance Accuracy	±10%
Inductance Accuracy	±20%
Temperature Rise	80°C Max (rated current, 2 phase on)
Ambient Temperature	-20°C ~ +50°C
Insulation Resistance	100MΩ Min, 500VDC
Dielectric Strength	500VAC for one minute
Shaft Radial Play	0.02Max (450 g-load)
Shaft Axial Play	0.08Max (450 g-load)
Max. radial force	28N (20mm from the flange)
Max. axial force	10N
Rotation	CW (See from Front Flange)

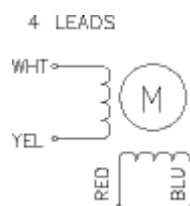
SIZE 42mm HYBRID STEPPING MOTOR SPECIFICATIONS

Model No.		Rated Voltage	Current /Phase	Resistance /Phase	Inductance /Phase	Holding Torque	# of Leads	Rotor Inertia	Weight	Detent Torque	Length
Single Shaft	Double Shaft	V	A	Ω	mH	g. cm		g-cm ²	kg	g-cm	mm
GD42ST34-0954DA	GD42ST34-0954DB	9.31	0.095	98	200	530	4	20	0.20	150	34
GD42ST38-0954DA	GD42ST38-0954DB	9.98	0.095	105	330	700	4	23	0.23	150	38

DIMENSIONS



WIRING DIAGRAM





0.9° SIZE 57mm HIGH TORQUE HYBRID STEPPING MOTORS

GENERAL SPECIFICATION FOR HIGH TORQUE HYBRID STEPPING MOTOR

Item	Specifications
Step Angle	0.9°
Step Angle Accuracy	±5% (full step, no load)
Resistance Accuracy	±10%
Inductance Accuracy	±20%
Temperature Rise	80°C Max (rated current, 2 phase on)
Ambient Temperature	-20°C ~ +50°C
Insulation Resistance	100MΩ Min, 500VDC
Dielectric Strength	500VAC for one minute
Shaft Radial Play	0.02Max (450 g-load)
Shaft Axial Play	0.08Max (450 g-load)
Max. radial force	75N (20mm from the flange)
Max. axial force	15N
Rotation	CW (See from Front Flange)

SIZE 57mm HIGH TORQUE HYBRID STEPPING MOTOR SPECIFICATIONS

Model No.		Rated Voltage	Current /Phase	Resistance /Phase	Inductance /Phase	Holding Torque	# of Leads	Rotor Inertia	Weight	Detent Torque	Length
Single Shaft	Double Shaft	V	A	Ω	mH	kg-cm		g-cm ²	kg	kg-cm	mm
GD57STH39-1006MA	GD57STH39-1006MB	5.7	1	5.7	5.4	3.9	6	120	0.45	0.21	39
GD57STH39-2006MA	GD57STH39-2006MB	2.8	2	1.4	1.4						
GD57STH39-3006MA	GD57STH39-3006MB	1.9	3	0.63	0.6						
GD57STH39-2804MA	GD57STH39-2804MB	2	2.8	0.7	1.4	5.5	4	300	0.7	0.4	56
GD57STH56-1006MA	GD57STH56-1006MB	7.4	1	7.4	10	9.0	6				
GD57STH56-2006MA	GD57STH56-2006MB	3.6	2	1.8	2.5						
GD57STH56-3006MA	GD57STH56-3006MB	2.3	3	0.75	1.1	12.6	4	480	1	0.68	76
GD57STH56-2804MA	GD57STH56-2804MB	2.5	2.8	0.9	2.5						
GD57STH76-1006MA	GD57STH76-1006MB	8.6	1	8.6	14	13.5	6				
GD57STH76-2006MA	GD57STH76-2006MB	4.5	2	2.25	3.6						
GD57STH76-3006MA	GD57STH76-3006MB	3	3	1	1.6						
GD57STH76-2804MA	GD57STH76-2804MB	3.2	2.8	1.13	3.6	18.9	4				

DIMENSIONS	WIRING DIAGRAM



1.8° SIZE 57mm HYBRID STEPPING MOTOR

GENERAL SPECIFICATION FOR HYBRID STEPPING MOTOR

Item	Specifications
Step Angle	1.8°
Step Angle Accuracy	±5% (full step, no load)
Resistance Accuracy	±10%
Inductance Accuracy	±20%
Temperature Rise	80°C Max (rated current, 2 phase on)
Ambient Temperature	-20°C ~ +50°C
Insulation Resistance	100MΩ Min, 500VDC
Dielectric Strength	500VAC for one minute
Shaft Radial Play	0.02Max (450 g-load)
Shaft Axial Play	0.08Max (450 g-load)
Max. radial force	75N (20mm from the flange)
Max. axial force	15N
Rotation	CW (See from Front Flange)

SIZE 57mm HYBRID STEPPING MOTOR SPECIFICATIONS

Model No.		Rated Voltage	Current /Phase	Resistance /Phase	Inductance /Phase	Holding Torque	# of Leads	Rotor Inertia	Weight	Detent Torque	Length
Single Shaft	Double Shaft	V	A	Ω	mH	kg-cm		g-cm ²	kg	kg-cm	mm
GD57ST41-1106A	GD57ST41-1106B	4	1.1	3.6	3.6	2.88	6	57	0.54	0.18	41
GD57ST41-0406A	GD57ST41-0406B	12	0.4	30	30						
GD57ST41-1564A	GD57ST41-1564B	2.8	1.56	1.8	3.6						
GD57ST51-0856A	GD57ST51-0856B	6	0.85	7.1	9	4.97	6	110	0.60	0.35	51
GD57ST51-0426A	GD57ST51-0426B	12	0.42	29	36						
GD57ST51-2804A	GD57ST51-2804B	1.8	2.8	0.65	1.6	6.9	4				
GD57ST56-1206A	GD57ST56-1206B	6	1.2	5	8	6.05	6	135	0.65	0.42	56
GD57ST56-0606A	GD57ST56-0606B	12	0.6	20	32						
GD57ST56-2554A	GD57ST56-2554B	2.8	2.55	1.1	3.6						
GD57ST76-1506A	GD57ST76-1506B	5.4	1.5	3.6	6	9	6	200	0.95	0.72	76
GD57ST76-0686A	GD57ST76-0686B	12	0.68	17.7	30						
GD57ST76-3304A	GD57ST76-3304B	2.7	3.3	0.85	3	2.5	4				

DIMENSIONS	WIRING DIAGRAM



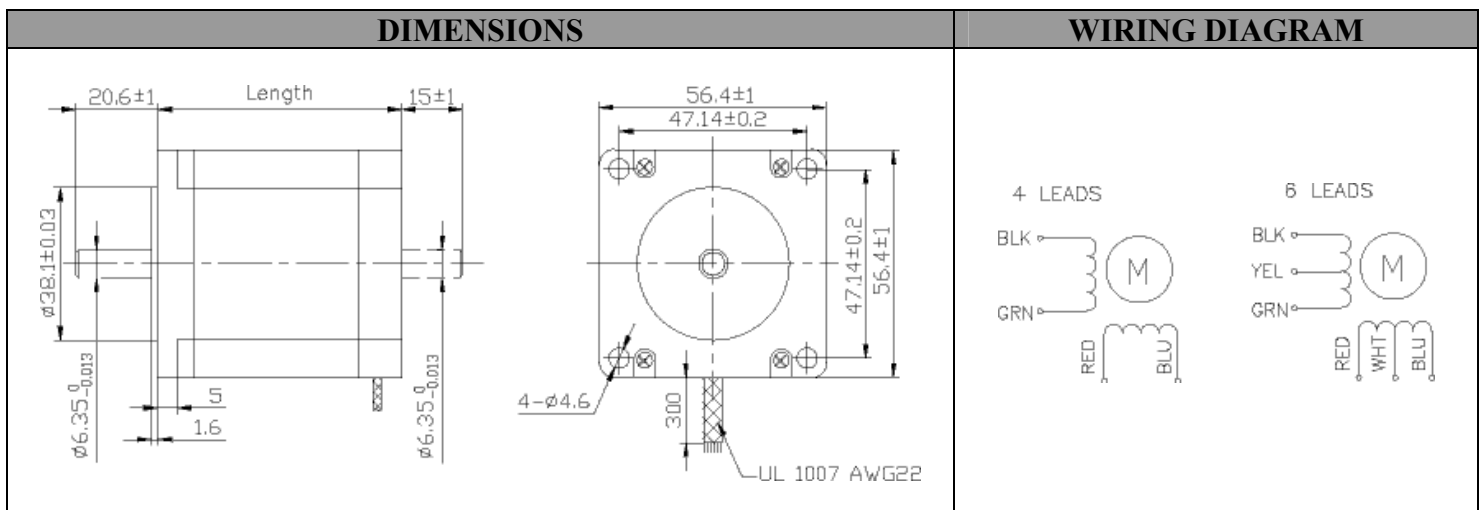
1.8° SIZE 57mm HIGH TORQUE HYBRID STEPPING MOTOR

GENERAL SPECIFICATION FOR HIGH TORQUE HYBRID STEPPING MOTOR

Item	Specifications
Step Angle	1.8°
Step Angle Accuracy	±5% (full step, no load)
Resistance Accuracy	±10%
Inductance Accuracy	±20%
Temperature Rise	80°C Max (rated current, 2 phase on)
Ambient Temperature	-20°C ~ +50°C
Insulation Resistance	100MΩ Min, 500VDC
Dielectric Strength	500VAC for one minute
Shaft Radial Play	0.02Max (450 g-load)
Shaft Axial Play	0.08Max (450 g-load)
Max. radial force	75N (20mm from the flange)
Max. axial force	15N
Rotation	CW (See from Front Flange)

SIZE 57mm HIGH TORQUE HYBRID STEPPING MOTOR SPECIFICATIONS

Model No.		Rated Voltage	Current /Phase	Resistance /Phase	Inductance /Phase	Holding Torque	# of Leads	Rotor Inertia	Weight	Detent Torque	Length
Single Shaft	Double Shaft	V	A	Ω	mH	kg-cm		g-cm ²	kg	kg-cm	mm
GD57STH41-1006A	GD57STH41-1006B	5.7	1	5.7	5.4	3.9	6	120	0.45	0.21	41
GD57STH41-2006A	GD57STH41-2006B	2.8	2	1.4	1.4						
GD57STH41-3006A	GD57STH41-3006B	1.9	3	0.63	0.6						
GD57STH41-2804A	GD57STH41-2804B	2	2.8	0.7	1.4	5.5	4				
GD57STH51-1006A	GD57STH51-1006B	6.6	1	6.6	8.2	7.2	6	275	0.65	0.36	51
GD57STH51-2006A	GD57STH51-2006B	3.3	2	1.65	2.2						
GD57STH51-3006A	GD57STH51-3006B	2.2	3	0.74	0.9						
GD57STH51-2804A	GD57STH51-2804B	2.3	2.8	0.83	2.2	10.1	4				
GD57STH56-1006A	GD57STH56-1006B	7.4	1	7.4	10	9.0	6	300	0.7	0.4	56
GD57STH56-2006A	GD57STH56-2006B	3.6	2	1.8	2.5						
GD57STH56-3006A	GD57STH56-3006B	2.3	3	0.75	1.1						
GD57STH56-2804A	GD57STH56-2804B	2.5	2.8	0.9	2.5	12.6	4				
GD57STH76-1006A	GD57STH76-1006B	8.6	1	8.6	14	13.5	6	480	1	0.68	76
GD57STH76-2006A	GD57STH76-2006B	4.5	2	2.25	3.6						
GD57STH76-3006A	GD57STH76-3006B	3	3	1	1.6						
GD57STH76-2804A	GD57STH76-2804B	3.2	2.8	1.13	3.6	18.9	4				





1.8° SIZE 60mm HIGH TORQUE HYBRID STEPPING MOTOR

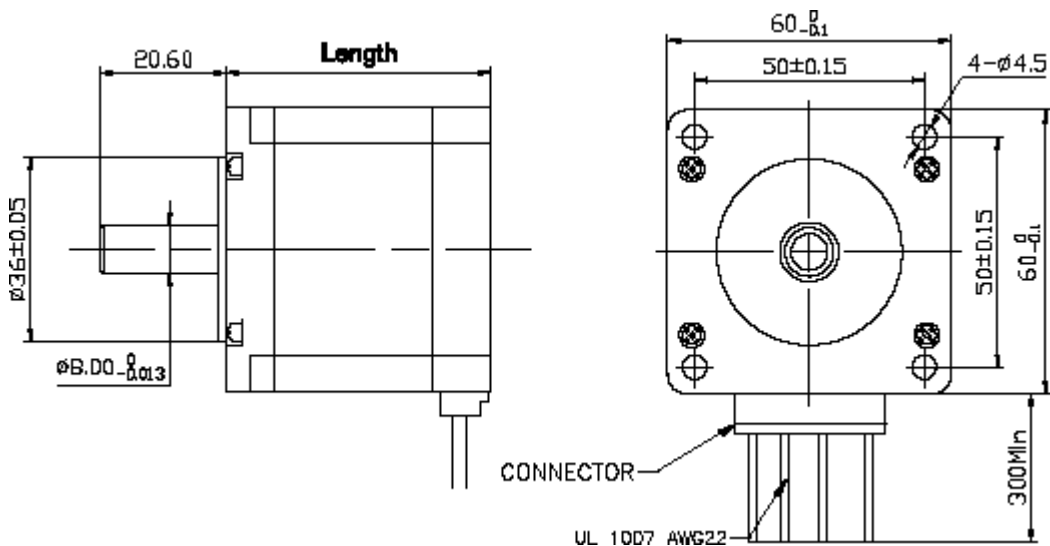
GENERAL SPECIFICATION FOR HIGH TORQUE HYBRID STEPPING MOTOR

Item	Specifications
Step Angle	1.8°
Step Angle Accuracy	±5% (full step, no load)
Resistance Accuracy	±10%
Inductance Accuracy	±20%
Temperature Rise	80°C Max (rated current, 2 phase on)
Ambient Temperature	-20°C ~ +50°C
Insulation Resistance	100MΩ Min, 500VDC
Dielectric Strength	500VAC for one minute
Shaft Radial Play	0.02Max (450 g-load)
Shaft Axial Play	0.08Max (450 g-load)
Max. radial force	75N (20mm from the flange)
Max. axial force	75N
Rotation	CW (See from Front Flange)

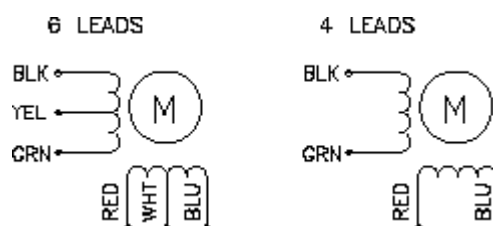
SIZE 60mm HIGH TORQUE HYBRID STEPPING MOTOR SPECIFICATIONS

Model No.	Rated Voltage	Current /Phase	Resistance /Phase	Inductance /Phase	Holding Torque	# of Leads	Rotor Inertia	Weight	Detent Torque	Length
Single Shaft	V	A	Ω	mH	g.cm		g-cm ²	kg	g-cm	mm
GD60STH87-2006A	5.6	2	2.8	6	12.5	6	570	1.34	0.4	87
GD60STH87-2504A	5	2.5	2	9.5	19.5	4				

DIMENSIONS



WIRING DIAGRAM



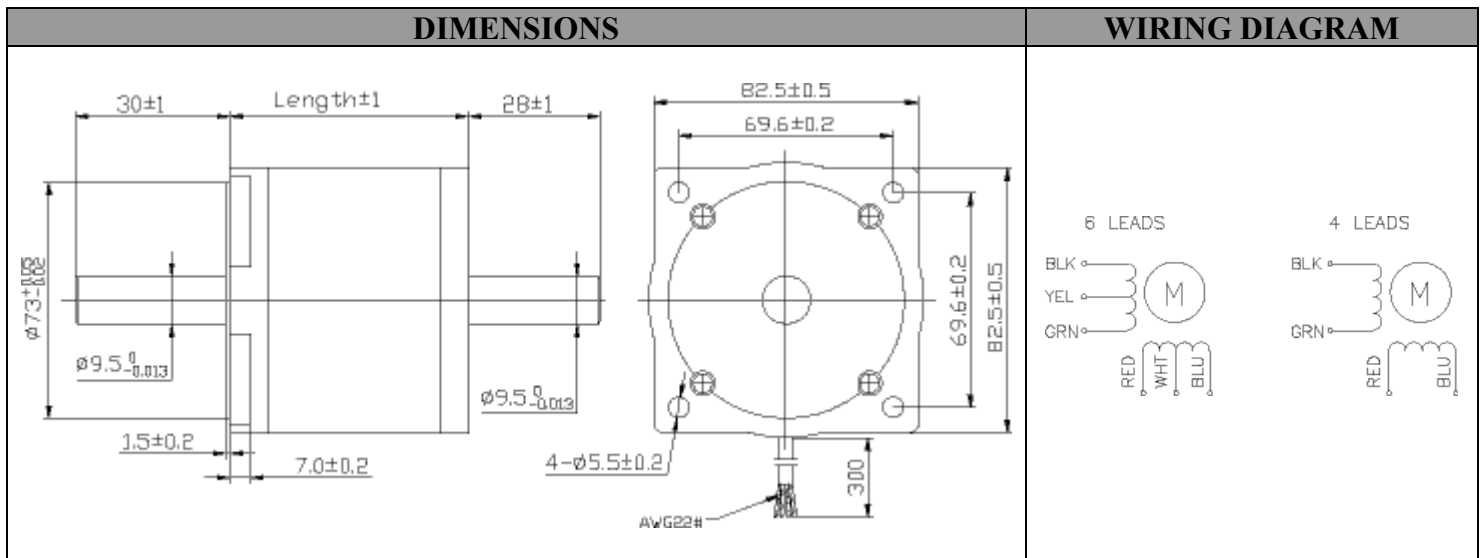
1.8° SIZE 86mm HYBRID STEPPING MOTOR

GENERAL SPECIFICATION FOR HYBRID STEPPING MOTOR

Item	Specifications
Step Angle	1.8°
Step Angle Accuracy	±5% (full step, no load)
Resistance Accuracy	±10%
Inductance Accuracy	±20%
Temperature Rise	80°C Max rated current, phase on)
Ambient Temperature	-20°C ~ +50°C
Insulation Resistance	100MΩ Min, 500VDC
Dielectric Strength	500VAC for one minute
Shaft Radial Play	0.02Max (450 g-load)
Shaft Axial Play	0.08Max (450 g-load)
Max. radial force	220N (20mm from the flange)
Max. axial force	60N
Rotation	CW (See from Front Flange)

SIZE 86mm HIGH TORQUE HYBRID STEPPING MOTOR SPECIFICATIONS

Model No.		Rated Voltage	Current /Phase	Resistance /Phase	Inductance /Phase	Holding Torque	# of Leads	Rotor Inertia	Weight	Detent Torque	Length
Single Shaft	Double Shaft	V	A	Ω	mH	kg-cm		g-cm ²	kg	kg-cm	mm
GD86ST62-4506A	GD86ST62-4506B	1.8	4.5	0.4	1.4	13	6	560	1.5	0.8	62
GD86ST62-1256A	GD86ST62-1256B	5.5	1.25	4.4	14	13	6				
GD86ST62-1406A	GD86ST62-1406B	0.7	14	20	60	13	6				
GD86ST62-5904A	GD86ST62-5904B	1.33	5.9	0.23	1.5	18	4				
GD86ST94-4006A	GD86ST94-4006B	3.0	4.0	0.75	4.5	26	6	1100	2.6	2.4	94
GD86ST94-2006A	GD86ST94-2006B	6.0	2.0	3.0	18	26	6				
GD86ST94-1006A	GD86ST94-1006B	12	1	12	72	26	6				
GD86ST94-5606A	GD86ST94-5606B	2.1	5.6	0.38	3.9	35	4				
GD86ST134-6706A	GD86ST134-6706B	3.0	6.7	0.45	2	36	6	1800	3.6	3.6	134
GD86ST134-4006A	GD86ST134-4006B	5.0	4.0	1.25	6.6	36	6				
GD86ST134-1806A	GD86ST134-1806B	12	1.8	6.5	41	36	6				
GD86ST134-5606A	GD86ST134-5606B	3.5	5.6	0.63	6.6	50	4				





1.8° SIZE 86mm HIGH TORQUE HYBRID STEPPING MOTOR

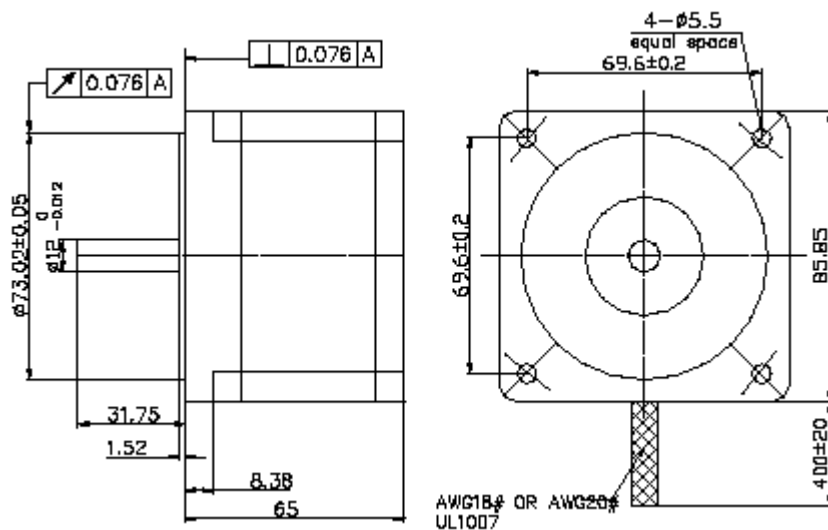
GENERAL SPECIFICATION FOR HIGH TORQUE HYBRID STEPPING MOTOR

Item	Specifications
Step Angle	1.8°
Step Angle Accuracy	±5% (full step, no load)
Resistance Accuracy	±10%
Inductance Accuracy	±20%
Temperature Rise	80°C Max (rated current, 2 phase on)
Ambient Temperature	-20°C ~ +50°C
Insulation Resistance	100MΩ Min, 500VDC
Dielectric Strength	500VAC for one minute
Shaft Radial Play	0.02Max (450 g-load)
Shaft Axial Play	0.08Max (450 g-load)
Max. radial force	220N (20mm from the flange)
Max. axial force	60N
Rotation	CW (See from Front Flange)

SIZE 86mm HIGH TORQUE HYBRID STEPPING MOTOR SPECIFICATIONS

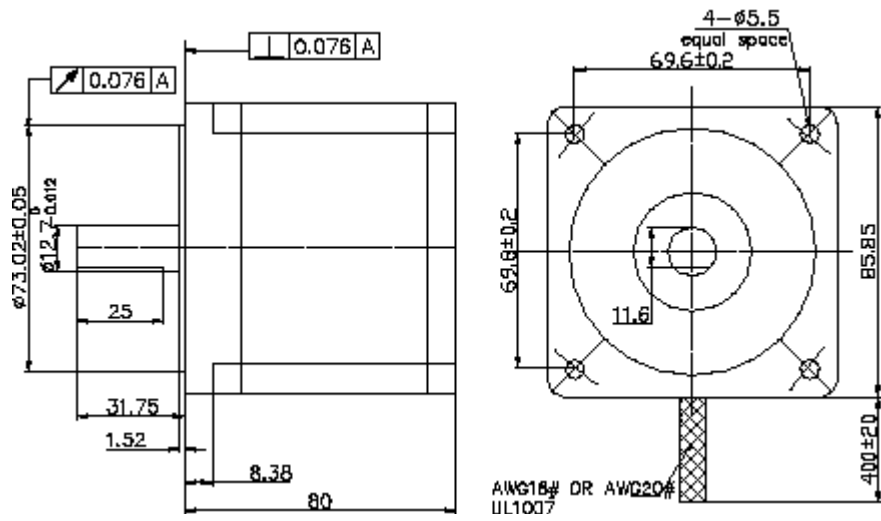
Model No.		Current /Phase	Resistance /Phase	Inductance /Phase	Holding Torque	# of Leads	Rotor Inertia	Weight	Detent Torque	Length
Single Shaft	Double Shaft	A	Ω	mH	kg-cm		g-cm ²	kg	kg-cm	mm
GD86STH65-5904A	GD86STH65-5904B	5.9	0.28	1.7	34	4	1000	1.7	0.8	65
GD86STH65-2808A	GD86STH65-2808B	2.8	1.4	3.9	34	8				
GD86STH80-5504A	GD86STH80-5504B	5.5	0.46	4	46	4	1400	2.3	1.2	80
GD86STH80-4208A	GD86STH80-4208B	4.24	0.75	3.4	46	8				
GD86STH118-6004A	GD86STH118-6004B	6	0.6	6.5	87	4	2700	3.8	2.4	118
GD86STH118-4208A	GD86STH118-4208B	4.2	0.9	6	87	8				
GD86STH156-6204A	GD86STH156-6204B	6.2	0.75	9	122	4	4000	5.4	3.6	156
GD86STH156-4208A	GD86STH156-4208B	4.2	1.25	8	122	8				

DIMENSIONS GD86STH65-XXXX

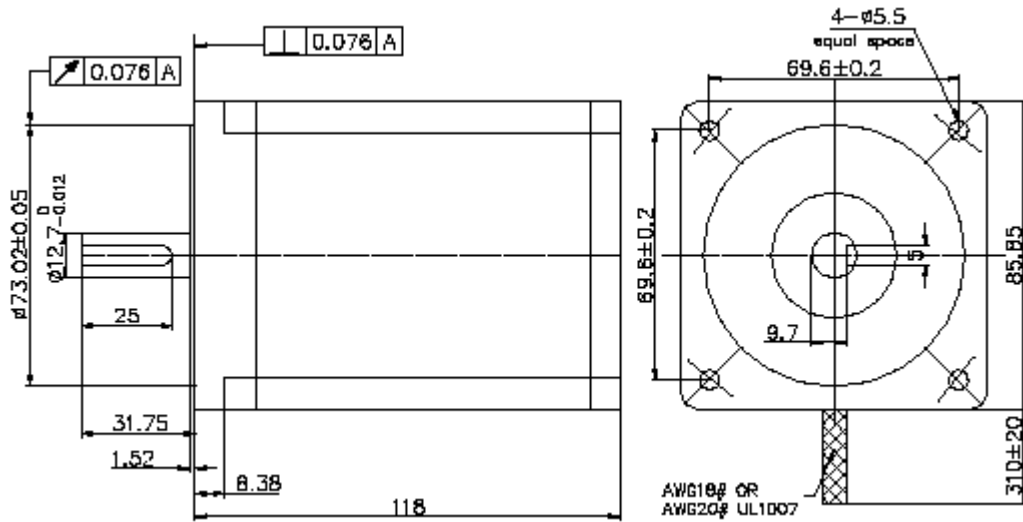




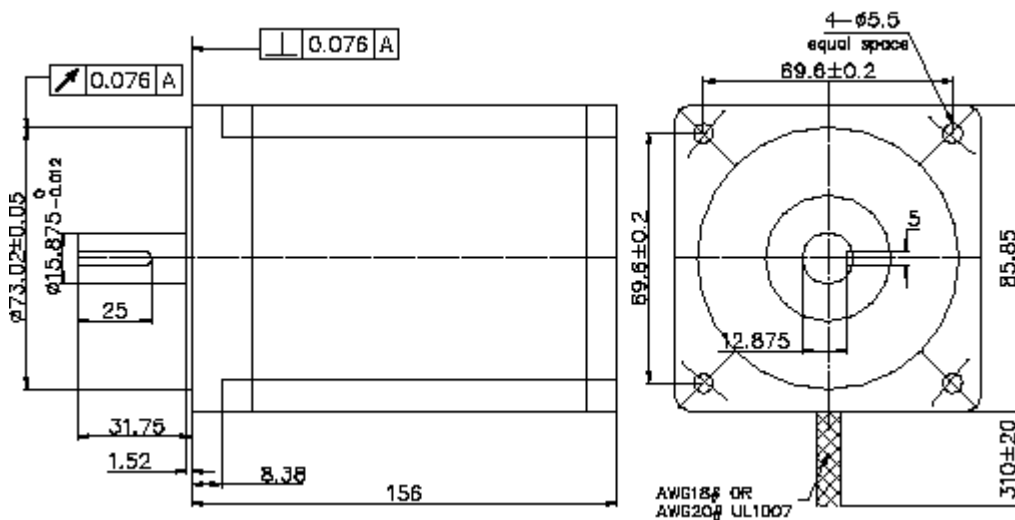
DIMENSIONS GD86STH80-XXXX



DIMENSIONS GD86STH118-XXXX

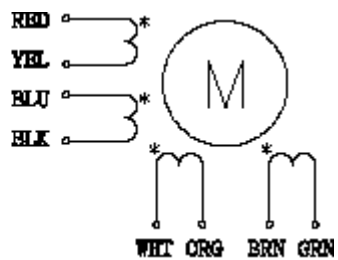
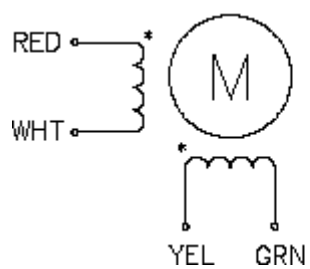


DIMENSIONS GD86STH156-XXXX





WIRING DIAGRAM





1.8° SIZE 110mm HIGH TORQUE HYBRID STEPPING MOTOR

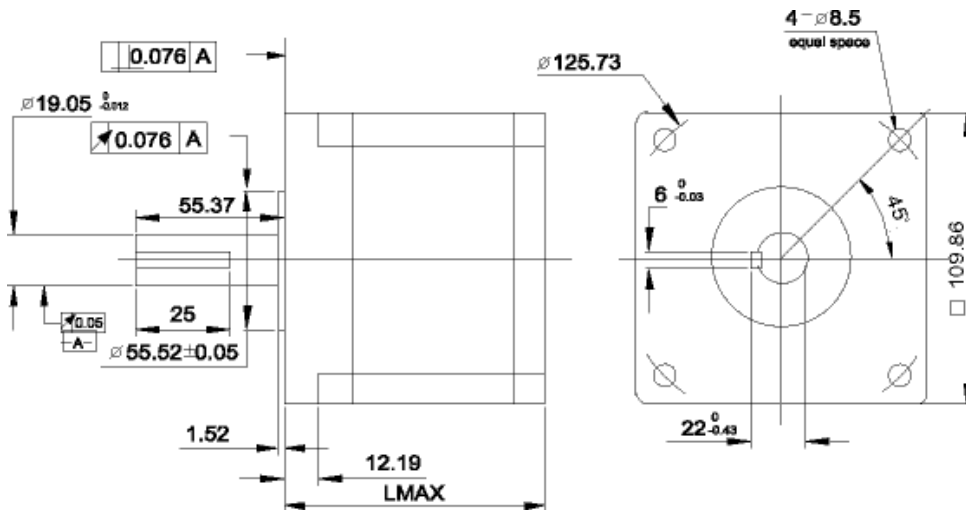
GENERAL SPECIFICATION FOR HIGH TORQUE HYBRID STEPPING MOTOR

Item	Specifications
Step Angle	1.8°
Step Angle Accuracy	±5% (full step, no load)
Resistance Accuracy	±10%
Inductance Accuracy	±20%
Temperature Rise	80°C Max (rated current, 2 phase on)
Ambient Temperature	-20°C ~ +50°C
Insulation Resistance	100MΩ Min, 500VDC
Dielectric Strength	500VAC for one minute
Shaft Radial Play	0.02Max (450 g-load)
Shaft Axial Play	0.08Max (450 g-load)
Max. radial force	220N (20mm from the flange)
Max. axial force	60N
Rotation	CW (See from Front Flange)

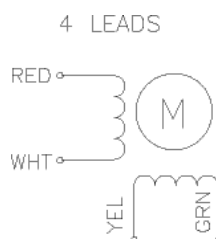
SIZE 110mm HIGH TORQUE HYBRID STEPPING MOTOR SPECIFICATIONS

Model No.	Current /Phase	Resistance /Phase	Inductance /Phase	Holding Torque	# of Leads	Rotor Inertia	Weight	Detent Torque	Length
Single Shaft	A	Ω	mH	N.m		g-cm ²	kg	kg-cm	mm
GD110STH99-5504A	5.5	0.9	12	112	4	5500	5	3	99
GD110STH150-6504A	6.5	0.8	15	21	4	10900	8.4	5.9	150
GD110STH201-8004A	8	0.67	12	28	4	16200	11.7	7.5	201

DIMENSIONS



WIRING DIAGRAM





1.8° AND 0.9° OR 0.72° AND 0.36° SIZE 110mm HYBRID STEPPING MOTOR

GENERAL SPECIFICATION FOR HYBRID STEPPING MOTOR

Item	Specifications
Step Angle	1.8° or 0.9°, 0.72° or 0.36°
Step Angle Accuracy	±5% (full step, no load)
Resistance Accuracy	±10%
Inductance Accuracy	±20%
Temperature Rise	80°C Max (rated current, 2 phase on)
Ambient Temperature	-20°C ~ +50°C
Insulation Resistance	100MΩ Min, 500VDC
Dielectric Strength	500VAC for one minute
Shaft Radial Play	0.02Max (450 g-load)
Shaft Axial Play	0.08Max (450 g-load)
Max. radial force	220N (20mm from the flange)
Max. axial force	60N
Rotation	CW (See from Front Flange)

SIZE 110mm HYBRID STEPPING MOTOR SPECIFICATIONS

Model No.	No. of phase	Step angle	Rated Voltage	Current /Phase	Resistance /Phase	Inductance /Phase	Holding Torque	Rotor Inertia	Weight	Detent Torque	Length
Single Shaft		degree	V	A	Ω	mH	N.m	kg-cm ²	kg	N.m	mm
GD110ST130-6008A	4	1.8	80-200	6	0.18	2	4.5	3.8	3.8	0.3	130
GD110ST130-6008MA	4	0.9	80-200	6	0.18	2	4.5	3.8	3.8	0.3	130
GD110ST192-6008A	4	1.8	80-200	6	0.22	2.1	7.1	7.5	7.5	0.6	192
GD110ST192-6008MA	4	0.9	80-200	6	0.22	2.1	7.1	7.5	7.5	0.6	192
GD110ST192-50010A	5	0.72	130	5	0.3	1.9	6.8	7.5	7.5	0.6	192
GD110ST192-50010MA	5	0.36	130	5	0.3	1.9	6.8	7.5	7.5	0.6	192
GD110ST192-30010A	5	0.72	130	3	0.5	5.3	6.8	7.5	7.5	0.6	192
GD110ST192-30010MA	5	0.36	130	3	0.5	5.3	6.8	7.5	7.5	0.6	192
GD110ST240-6008A	4	1.8	80-200	6	0.3	3.2	10.3	11.5	11.5	0.9	240
GD110ST240-6008MA	4	0.9	80-200	6	0.3	3.2	10.3	11.5	11.5	0.9	240
GD110ST240-50010A	5	0.72	130	5	0.37	3.4	10.3	11.5	11.5	0.9	240
GD110ST240-50010MA	5	0.36	130	5	0.37	3.4	10.3	11.5	11.5	0.9	240
GD110ST240-30010A	5	0.72	130	3	0.62	9.5	10.3	11.5	11.5	0.9	240
GD110ST240-30010MA	5	0.36	130	3	0.62	9.5	10.3	11.5	11.5	0.9	240

DIMENSIONS	WIRING DIAGRAM



SIZE 57mm 3-PHASE HYBRID STEPPING MOTOR

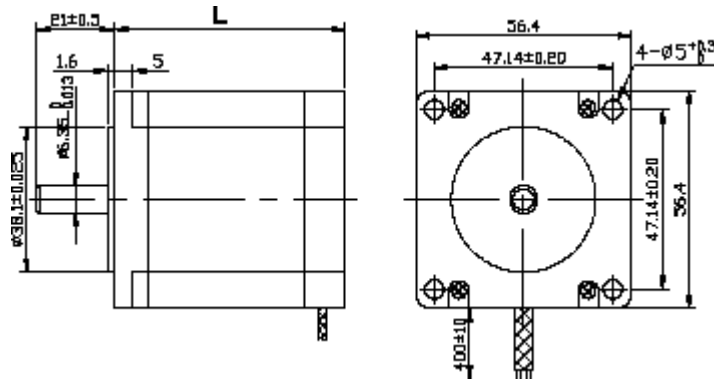
GENERAL SPECIFICATION FOR HIGH TORQUE HYBRID STEPPING MOTOR

Item	Specifications
Step number per rev	200,400,500,1000,2000,4000,5000,10000
Step Angle Accuracy	±5% (full step, no load)
Resistance Accuracy	±10%
Inductance Accuracy	±20%
Temperature Rise	80°C Max (rated current, 2 phase on)
Ambient Temperature	-20°C ~ +50°C
Insulation Resistance	100MΩ Min, 500VDC
Dielectric Strength	500VAC for one minute
Shaft Radial Play	0.02Max (450 g-load)
Shaft Axial Play	0.08Max (450 g-load)
Max. radial force	75N (20mm from the flange)
Max. axial force	15N
Insulation class	H

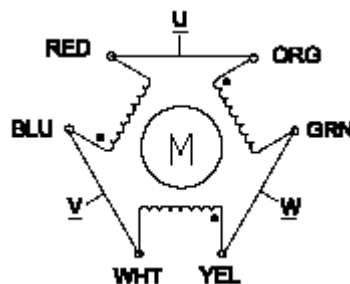
SIZE 57mm HIGH TORQUE HYBRID STEPPING MOTOR SPECIFICATIONS

Model No.	Rated Voltage	Inductance /Phase	Resistance /Phase	Current /Phase	Holding Torque	Detent Torque	Rotor Inertia	Weight	Length
Unit	V	mH	Ω	A	N.m	kg-cm	g-cm ²	kg	mm
GD573P42-5206A	6.76	1.4	1.3	5.2	0.45	2.1	110	0.45	42
GD573P56-5606A	4	1.7	0.7	5.6	0.90	4	300	0.75	56
GD573P79-5806A	6	2.4	1.05	5.8	1.5	6.8	480	1.10	79

DIMENSIONS



WIRING DIAGRAM





SIZE 86mm 3-PHASE HYBRID STEPPING MOTOR

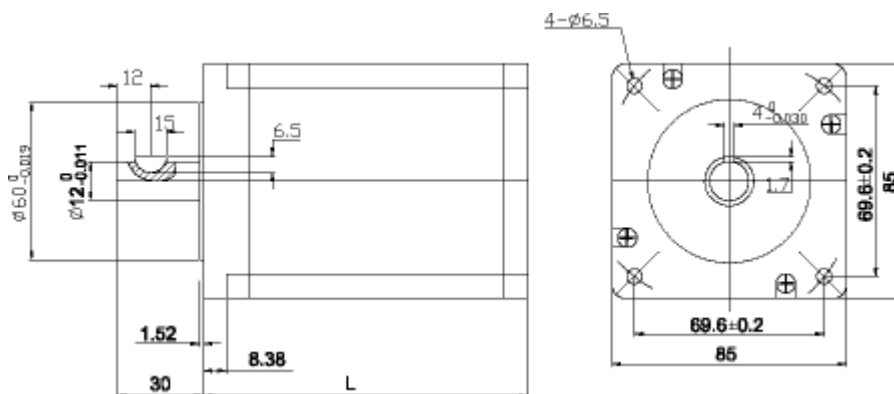
GENERAL SPECIFICATION FOR HIGH TORQUE HYBRID STEPPING MOTOR

Item	Specifications
Step number per rev	200,400,500,1000,2000,4000,5000,10000
Step Angle Accuracy	±5% (full step, no load)
Resistance Accuracy	±10%
Inductance Accuracy	±20%
Temperature Rise	80°C Max (rated current, 2 phase on)
Ambient Temperature	-20°C ~ +50°C
Insulation Resistance	100MΩ Min, 500VDC
Dielectric Strength	500VAC for one minute
Shaft Radial Play	0.02Max (450 g-load)
Shaft Axial Play	0.08Max (450 g-load)
Max. radial force	220N (20mm from the flange)
Max. axial force	60N
Insulation class	H

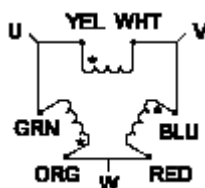
SIZE 86mm HIGH TORQUE HYBRID STEPPING MOTOR SPECIFICATIONS

Model No.	Voltage /Phase	Current /Phase	Resistance /Phase	Inductance /Phase	Holding Torque	Ratedng Torque	Rotor Inertia	Weight	Length
Unit	VAC	A	Ω	mH	N.m	N.m	g-cm ²	kg	mm
GD863P67-01	325	1.75	4.25	12.3	2.26	2	1100	1.65	67
GD863P97-01	325	2	5.4	23	4.52	4	2320	2.7	97
GD863P97-02	40	5.8	0.9	3.2	4.52	4			
GD863P97-03	40	5.2	1.1	6.8	4.52	4			
GD863P127-01	325	2.25	9	41	6.78	6	3300	3.8	127
GD863P127-02	40	5.2	2.75	13.7	6.78	6			

DIMENSIONS



WIRING DIAGRAM





SIZE 110mm 3-PHASE HYBRID STEPPING MOTOR

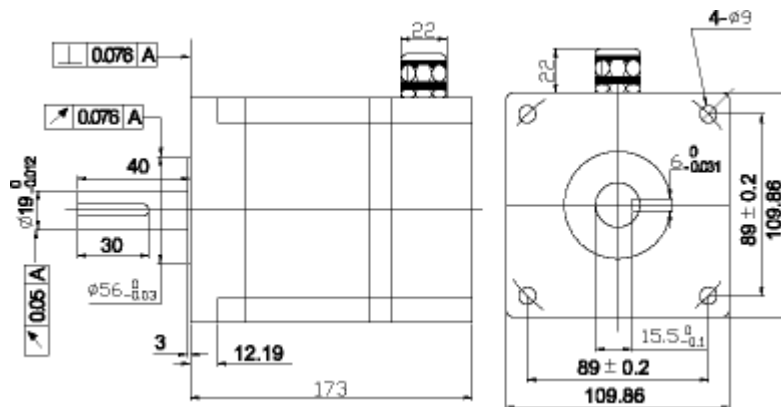
GENERAL SPECIFICATION FOR HIGH TORQUE HYBRID STEPPING MOTOR

Item	Specifications
Step number per rev	200,400,500,1000,2000,4000,5000,10000
Step Angle Accuracy	±5% (full step, no load)
Resistance Accuracy	±10%
Inductance Accuracy	±20%
Temperature Rise	80°C Max (rated current, 2 phase on)
Ambient Temperature	-20°C ~ +50°C
Insulation Resistance	100MΩ Min, 500VDC
Dielectric Strength	500VAC for one minute
Shaft Radial Play	0.02Max (450 g-load)
Shaft Axial Play	0.08Max (450 g-load)
Max. radial force	220N (20mm from the flange)
Max. axial force	60N
Insulation class	H

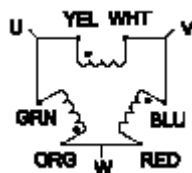
SIZE 110mm HIGH TORQUE HYBRID STEPPING MOTOR SPECIFICATIONS

Model No.	Max starting speed	Voltage /Phase	Current /Phase	Holding Torque	Ratedng Torque	Rotor Inertia	Weight	Length
Unit	Rpm/s	VAC	A	N.m	N.m	g-cm ²	kg	mm
GD1103P170-01	4.7	325	4.1	13.92	12	10500	8	173

DIMENSIONS



WIRING DIAGRAM



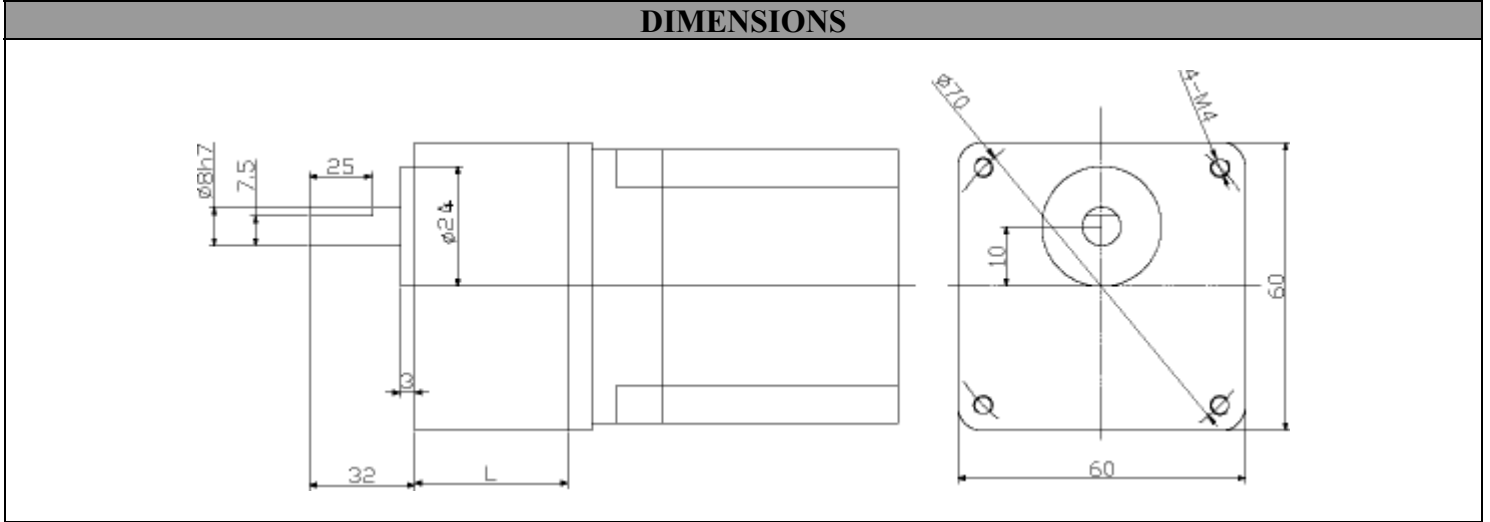


GD57STHJB GEARBOX STEPPING MOTOR

GEARBOX SPECIFICATION

Ratio	3	12.5	15	25	30	50	75	90	100	120	150
Number of gear trains	2	2	3	3	3	4	4	5	5	5	5
Length (L) mm	32	32	32	32	32	42	42	42	42	42	42
Peak torque kg.cm	15	15	15	15	15	25	25	50	50	50	50

DIMENSIONS

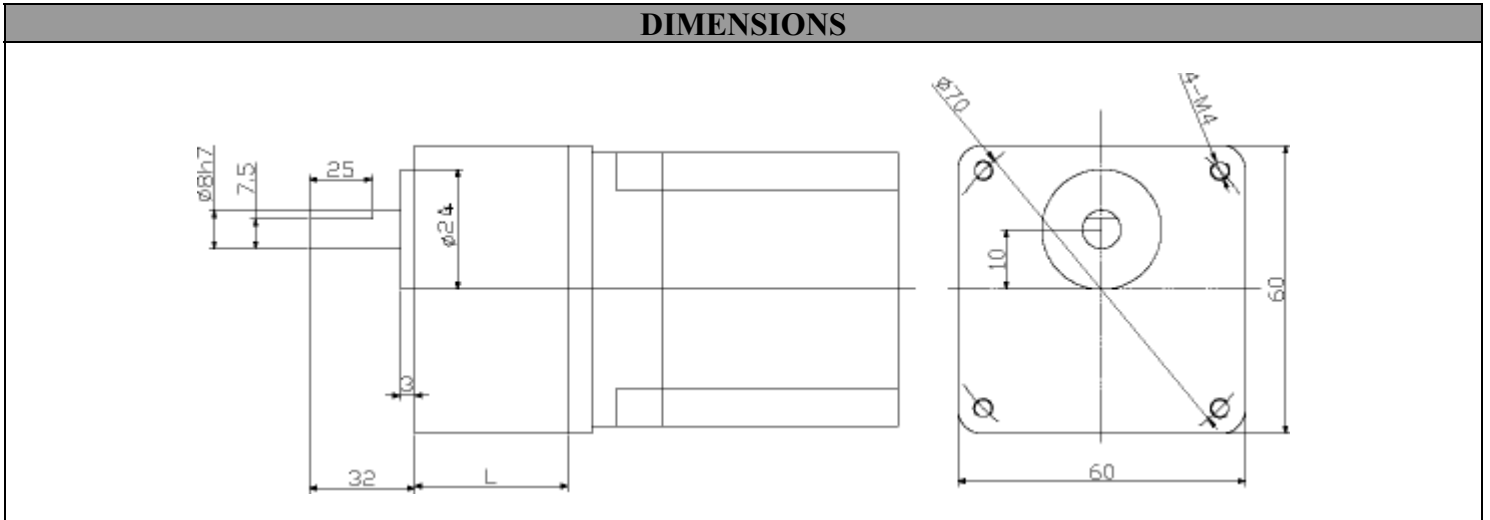


GD86STHJB GEARBOX STEPPING MOTOR

GEARBOX SPECIFICATION

Ratio	3	5	7.5	12.5	15	25	30	50	75	100	120	150
Number of gear trains	2	2	2	2	2	3	3	4	4	4	4	4
Length (L) mm	45	45	45	45	60	60	60	60	60	60	60	60
Peak torque kg.cm	45	65	65	65	90	90	90	250	250	250	250	250

DIMENSIONS





ORDER INFO

For order mailto sale@giden.ru

Office №11, bld.62
6th Radialnaya Str., Moscow, Russia

(TEL) +7 (495) 225-54-52

(FAX) +7 (495) 225-54-52

END OF DOCUMENT (April 2006)
